

CENTRAL PROVINCES DISTRICT GAZETTEERS

(CHHINDWARA DISTRICT)

(B. Volume)

STATISTICAL TABLES.

(1891—1914)

1489



CALCUTTA:
PRINTED AT THE BAPTIST MISSION PRESS.

1914

910.3
C395-
(B-chhi)

7034

SL NO. 038217

INDEX

Table	Title.	Page
1.	Rainfall (in inches) at Head-quarters Station	2
2.	Statistics of Area and Population, and Variation in Population for Tahsils	4
3.	Variation in Population of Towns since 1872	<i>ibid.</i>
4.	Castes over 3,000 (arranged in order of precedence)	6
5.	Language	8
6.	Vital Statistics	10
7.	General Statistics of Cultivation	14
8.	Outturn of Crops (Outturn in American Notation, taking 100 to represent a Normal Crop)	22
9.	Loans (Principal and Interest)	26
10.	Forest Area and Revenue	30
11.	Retail Prices (in seers per rupee) of the District Staple Food-grain for each month of the decade at the Head-quarters Town	34
12.	Wages (monthly) and Retail Prices (in seers per rupee)	38
13.	Railway Stations	42
14.	Roads maintained by the Public Works Department and the District Council, with Ferries, Dāk and Inspection Bungalows and Encamping-grounds on them	44
	Other Local Roads and Ferries maintained by the District Council	46
15.	Post and Telegraph Offices	48
16.	Crime	50
17.	Criminal Justice	52
18.	Civil and Revenue Business	54
19.	Land Revenue and Cesses	56
20.	Excise	62
21.	Income-tax	66
22.	General Revenue Statistics	68
23.	Income and Expenditure from District Funds	70
24.	Income and Expenditure of Municipalities	74
25.	Education—Literacy (with figures of religion)	86
26.	Education—Number of Institutions and Scholarr	88
27.	Dispensaries	96
28.	Vaccination	100
29.	Polymetrical Table of the Chhindwara District	102
30.	Local Weights and Measures	104
Appendix.—Notes to supplement, correct and enlarge the information contained in the A. Volume Gazetteer of the Chhindwara District		105

Chhindwara District.

TABLE No. 1.—Rainfall (in
(This Table is taken from Statement I

YEAR.	June.	July.	August.	Total early monsoon.	September.	October.	November.	Total late monsoon.
1	2	3	4	5	6	7	8	9
Average of 33 years ending 1902-03.	Inches.	Inches.	Inches.	Inches.	Inches.	Inches.	Inches.	Inches.
	7.92	11.69	7.82	27.43	8.55	2.16	0.51	11.22
1891-92 ..	0.32	24.32	4.94	29.58	21.42	0.35	..	21.77
1892-93 ..	2.95	15.03	14.91	32.89	9.84	3.51	..	33.22
1893-94 ..	9.47	4.44	8.89	22.80	2.80	0.98	2.24	6.02
1894-95 ..	5.20	10.86	8.91	24.97	16.27	4.74	0.97	21.95
1895-96 ..	9.53	6.61	5.53	21.67	3.79	0.02	..	3.81
1896-97 ..	8.37	14.25	6.79	29.41	1.28	1.28
1897-98 ..	3.61	12.20	6.15	21.96	7.40	1.36	..	8.76
1898-99 ..	9.13	11.86	6.93	27.92	3.15	0.12	..	3.27
1899-1900 ..	2.66	4.42	3.29	10.37	0.91	0.18	..	1.09
1900-01 ..	2.75	8.78	12.03	23.56	11.91	11.91
1901-02 ..	3.99	16.03	11.63	31.65	4.33	0.61	..	4.94
1902-03 ..	1.68	12.07	5.50	19.25	4.43	0.92	0.43	5.78
1903-04 ..	6.89	11.39	8.97	27.25	12.77	2.10	..	14.87
1904-05 ..	3.26	6.71	4.17	14.14	8.39	1.47	..	9.86
1905-06 ..	2.48	12.85	5.00	20.33	15.01	0.49	..	15.50
1906-07 ..	7.83	20.27	8.60	36.70	7.78	0.31	..	8.09
1907-08 ..	5.90	9.16	9.31	24.37	1.30	0.00	0.80	2.10
1908-09 ..	7.98	8.85	8.41	25.24	5.12	0.05	0.00	5.17
1909-10 ..	4.03	8.02	7.34	19.39	5.53	0.00	0.00	5.53
1910-11 ..	11.54	8.71	14.08	34.33	12.11	0.59	2.75	15.45
1911-12 ..	4.70	3.02	9.87	17.59	8.45	1.47	3.54	13.46
1912-13 ..	2.10	13.02	11.75	26.87	5.51	..	3.70	9.21
1913-14 ..	9.89	15.18	13.46	38.53	3.20	0.11	..	3.31

inches) at Head-quarters Station.
of the Season and Crop Report.)

December.	January.	February.	Total cold weather rains.	March.	April.	May.	Total hot weather rains.	Total for the year.	YEAR.
10	11	12	13	14.	15	16	17	18	19
Inches.	Inches.	Inches.	Inches.	Inches.	Inches.	Inches.	Inches.	Inches.	Average of 33 years ending 1902-03.
0.37	0.74	0.53	1.64	0.35	0.39	0.63	1.37	41.00	1891-92
..	0.60	0.40	1.00	52.35	1892-93
..	3.65	0.14	3.79	2.78	0.20	0.82	3.80	53.83	1893-94
..	0.11	0.08	0.19	1.23	0.02	0.02	1.27	30.28	1894-95
0.17	..	0.78	0.95	0.41	0.10	0.07	0.58	48.48	1895-96
..	25.48	1896-97
0.15	0.09	2.46	2.70	0.04	0.16	..	0.20	33.59	1896-97
..	..	1.22	1.22	..	0.65	..	0.65	32.59	1897-98
..	..	0.81	0.81	..	0.38	1.13	1.51	33.51	1898-99
..	0.41	0.07	0.48	..	2.25	0.08	2.33	14.27	1899-1900
0.76	2.11	2.46	5.33	0.88	0.58	0.89	2.35	43.15	1900-01
..	0.48	0.01	0.49	..	0.14	0.05	0.19	37.27	1901-02
0.49	0.26	0.05	0.80	2.80	2.86	28.60	1902-03
..	0.02	0.77	.79	0.83	..	0.17	1.00	43.01	1903-04
0.78	.35	0.52	1.65	0.04	0.50	0.88	1.42	27.07	1904-05
..	..	0.95	0.95	1.07	1.07	37.85	1905-06
1.56	0.11	5.63	7.30	0.02	1.07	0.06	1.15	53.24	1906-07
1.21	0.97	0.62	2.80	0.90	0.33	0.00	1.23	30.50	1907-08
0.57	0.05	0.39	1.01	0.38	1.56	0.48	2.42	33.84	1908-09
2.23	0.00	0.00	2.23	0.00	0.00	0.01	0.01	27.16	1909-10
0.00	0.77	..	0.77	0.43	0.43	50.98	1910-11
0.00	1.19	2.67	3.86	0.00	0.08	0.00	0.08	34.99	1911-12
0.34	..	1.20	1.54	0.98	..	1.32	2.30	39.02	1912-13
1.03	..	0.70	1.73	0.96	1.70	0.20	2.86	46.43	1913-14

.

Chhindwara District.

TABLE No. 2.—Statistics of Area and Population

(This Table has been compiled from Imperial

TAHSIL.	Area.	Number of Towns.	Number of Villages.	Number of occupied houses.	POPULATION, 1911.		
					Males.	Females.	Total.
1	2	3	4	5	6	7	8
Chhindwara ..	1,925	1	947	58,062	141,654	146,063	287,717
Do. Zamindari ..	1,597	..	491	15,599	38,858	38,886	77,744
Sausar ..	1,109	3	404	31,024	75,372	76,115	151,487
Grand Total ..	4,631	4	1,842	105,585	255,884	261,064	516,948

* Tahsil figures include only Hindu, Animist and Muhammadan literates as literacy

Chhindwara District.

TABLE No. 3.—Variation in

(This Table has been compiled from

Towns.	POPULATION.						PERCENTAGE	
	1911.	1901.	1891.	1881.	1872.	1901—1911.	1891—1901.	
1	2	3	4	5	6	7	8	
Chhindwara ..	12,872	9,736	8,973	8,220	8,626	+32.2	+9	
Sausar ..	5,442	4,785	4,707	4,311	..	+13.7	+2	
Mohgaon ..	5,225	5,730	5,565	5,180	4,921	-8.8	+3	
Pandhurna ..	7,058	8,904	8,172	7,460	5,218	-20.7	+9	

and Variation in Population for Tahsils.

Census Table V and the Provincial Census Tables I and II.)

DENSITY PER SQUARE MILE.		Population, 1901.	Population, 1891.	Population, 1881.	Percentage of increase or decrease, 1901-1911.	Percentage of increase or decrease, 1891-1901.	Percentage of increase or decrease, 1881-1891.	Number of literate persons.
Total.	Rural.							
9	10	11	12	13	14	15	16	17
149	143	226,716	218,921	197,578	+20.91	+3.56	+10.6	7,021
49	49	60,001	68,051	64,512	+29.57	-11.83	+5.5	959
137	121	121,148	120,451	110,801	+25.04	+5.8	+9.1	5,123
112.	105	407,865	407,423	372,899	+26.74	+11	+9.2	*13,097

for the Christian and minor religions was not sorted for smaller units than the district.

Population of Towns since 1872.

Census Imperial Tables IV and V.)

OF VARIATION.		RELIGIONS, 1811.					REMARKS.
1881-1891.	1872-1881.	Hindu.	Musalman.	Jain.	Christian.	Others.	
9	10	11	12	13	14	15	16
+9	-5	9,034	2,732	307	431	368	
+9	..	4,873	349	15	1	204	
+7	+5	4,617	476	131	..	1	
+9	+13	6,284	661	71	..	42	

Chhindwara District.

TABLE No. 4.—Caste over 3,000 (arranged in order of precedence).

CASTE.	Persons according to Census 1911.	Percentage of population.	REMARKS.
1	2	3	4
GROUP I (a).			
<i>Twice-born castes (wearing the sacred thread).</i>			
Brahman	9,044	2	
Rajput	11,005	2	
[Kayastha	891	2]
Bania	4,302	1	
Total Group I (a) ..	25,242	5	
GROUP II (a).			
<i>Higher cultivators (from whom a Brahman takes water).</i>			
Ahir	42,633	8	
Kurmi	4,152	1	
Kunhi	26,991	5	
Lodhi	13,146	3	
Mali	9,712	2	
Kirar	5,937	1	
Total Group II (a) ..	102,671	20	
GROUP II (b).			
<i>Higher artisans (from whom a Brahman takes water).</i>			
Berhai	4,241	1	
Sunar	4,494	1	
Total Group II (b) ..	8,735	2	
GROUP II (c).			
<i>Serving castes (from whom a Brahman takes water).</i>			
Nai	5,012	1	
Dhimar	6,591	1	
Total Group II (c) ..	11,603	2	

Chhindwara District.

TABLE No. 4.—Caste over 3,000 (arranged in order of precedence)—[concluded].

CASTE.	Persons according to Census 1911.	Percentage of population.	REMARKS.
1	2	3	
GROUP III (a).			
<i>Lower cultivating and labouring castes.</i>			
Bhoyar	20,746	4	
Total Group III (a)	20,746	4	
GROUP III (b).			
<i>Lower artisans, Trading and Miscellaneous castes.</i>			
Kalar	7,304	1	
Kosthi	3,557	1	
Teli	16,894	3	
Lohar	7,025	1	
Bahna	4,545	1	
Total Group III (b)	39,985	8	
GROUP IV.			
<i>Forest Tribes.</i>			
Bharia—Bhuwia	7,737	1	
Gowari	3,411	1	
Gond	159,979	31	
Korku	16,423	3	
Kol	3,947	1	
Pardhan	9,161	2	
Total Group IV	200,658	39	
GROUP V.			
<i>Impure castes.</i>			
Katia	11,222	2	
Mehra	36,903	7	
Dhobi	3,287	1	
Chamar	7,914	2	
Total Group V	59,326	11	
<i>Others.</i>			
Mussalman	10,949	2	
European and Anglo-Indian	92	.02]
Indian Christian	663	.1	

Chhindwara District.

TABLE No 5.—Language.

(This Table has been prepared from Census Table No. X.)

Name of Language.	Number of persons speaking the language.	REMARKS.
1	2	3
Hindi	259,802	
Urdu	303	
Marwari	879	
Marathi	97,526	
Gujarati	1,166	
Gondi	140,316	
Telugu	289	
Korku	15,120	
Banjari	1,094	
English	60	
Other minor languages	393	

Chhindwara District

TABLE No. 6.—
(This Table has been compiled from

YEAR.	BIRTHS.		DEATHS.		Percentage of deaths under 5 years of age to total.
	Total.	Per mille of population.	Total.	Per mille of population.	
1	2	3	4	5	6
1891	10,223	47·82	9,664	28·47	54·19
1892	15,287	44·14	8,344	24·00	57·00
1893	12,219	35·00	10,341	29·69	50·15
1894	13,113	37·92	15,566	47·33	46·44
1895	15,230	43·92	14,063	40·53	50·68
1896	12,018	34·96	15,210	44·24	40·58
1897	12,389	36·59	17,615	52·03	35·28
1898	13,451	39·27	9,216	26·88	49·92
1899	18,594	53·07	11,153	31·82	52·90
1900	13,545	40·24	28,190	83·78	38·05

(a) For purposes of calculation the figures of population.

Vital Statistics. (a)
the Annual Sanitary Reports.)

DEATHS FROM:—								YEAR.
Cholera.	Per mille of popula- tion.	Small-pox.	Per mille of popula- tion.	Plague.	Per mille of popula- tion.	Fever.	Per mille of popula- tion.	
7	8	9	10	11	12	13	14	15
602	1.77	9	0.03	5,554	16.36	1891
49	0.14	10	0.03	5,044	14.56	1892
112	0.32	6,820	10.58	1893
950	2.76	3	0.008	9,447	27.20	1894
204	0.59	116	0.33	8,020	24.84	1895
1,123	3.27	335	0.97	8,739	25.42	1896
1,628	4.84	158	0.47	9,314	27.51	1897
..	..	20	0.06	5,577	16.27	1898
..	..	31	0.09	6,161	17.59	1899
5,738	17.05	30	0.09	11,264	33.46	1900

each year have been deduced from Vital Statistics Returns.

Chhindwara District.

TABLE No. 6.—

(This Table has been compiled from

YEAR.	BIRTHS.		DEATHS.		Percentage of deaths under 5 years of age to total.
	Total.	Per mille of population.	Total.	Per mille of population.	
1	2	3	4	5	6
1901	12,298	35.35	7,794	22.40	52.25
1902 (b)	22,907	56.15	9,731	23.85	58.54
1903	19,556	47.94	12,037	29.51	61.64
1904	26,105	63.99	11,378	27.89	61.28
1905	23,574	57.78	14,411	35.33	64.06
1906	24,477	60.00	16,000	39.22	68.17
1907	23,019	56.42	15,682	38.44	57.73
1908	20,985	51.44	14,457	35.44	59.66
1909	21,069	51.04	12,585	30.84	61.89
1910	23,782	58.29	18,091	44.34	61.50
1911	24,559	47.50	15,680	30.33	55.66
1912	23,268	45.01	19,464	37.65	51.98
1913	25,780	49.86	12,503	25.30	60.23
1914	23,086	45.79	10,806	32.51	62.05

(a) For purposes of calculation the figures of population

(b) The registration of Vital Statistics was introduced

Vital Statistics (a)—(concluded).
 the Annual Sanitary Reports.)

DEATHS FROM:—								
Cholera.	Per mille of population.	Small-pox.	Per mille of population.	Plague.	Per mille of population.	Fever.	Per mille of population.	YEAR.
7	8	9	10	11	12	13	14	15
..	..	216	0.62	4,057	11.66	1901
..	..	75	0.18	5,200	12.75	1902
..	..	13	0.03	3	0.01	6,561	16.08	1903
8	0.01	..	0.02	382	0.03	5,754	14.11	1904
..	..	32	0.08	913	2.24	7,104	17.41	1905
394	0.96	171	0.42	130	0.31	8,614	21.11	1906
38	0.09	75	0.18	1,417	3.46	8,175	20.04	1907
330	0.80	24	0.05	1	..	8,413	20.62	1908
..	34	0.08	7,238	17.74	1909
..	..	30	0.07	560	1.39	10,400	25.49	1910
..	..	18	0.03	800	1.56	9,420	18.22	1911
1,478	2.85	7	0.01	1,314	2.54	9,753	18.86	1912
39	0.07	36	0.06	7,067	13.67	1913
404	0.78	150	0.29	9,362	18.10	1914
..
..
..

each year have been deduced from Vital Statistics Returns.
 the first time into the Jagirs of Chhindwara in this year.

Chhindwara District.

TABLE No. 7.—General

(This Table has been compiled from information

YEAR.	Total area.	Government forests.	Village area.	UNOCCUPIED AREA.		
				Tree-forest, scrub-jungle and grass.	Groves, water, hill and rock, and roads and buildings.	Total.
				1	2	3
	Acres.	Acres.	Acres.	Acres.	Acres.	Acres.
At 30 years' settlement ..	2,703,702	..	1,685,673	893,147
1891-92	2,963,200	461,425	1,457,031	371,543	232,273	603,816
1892-93	2,963,200	438,398	1,457,402	355,973	232,422	588,395
1893-94	2,963,200	436,155	1,459,127	343,401	230,781	574,182
At last settlement ..	2,963,200	452,386	1,440,106	351,229	230,286	581,515
1894-95	2,963,200	435,689	1,459,603	336,527	229,214	565,741
1895-96	2,963,200	435,494	1,459,798	330,180	228,311	558,491
1896-97	2,963,907	435,229	1,460,073	324,278	226,565	550,843
1897-98	2,963,907	433,292	1,461,615	317,170	224,936	542,106
1898-99	2,963,907	432,901	1,461,249	308,136	223,423	531,559
1899-1900	2,963,907	433,761	1,460,271	305,654	222,690	528,344
1900-01 (a)	2,963,907	438,260	2,492,315	322,811	1,002,329	1,325,140

(a) From this year forward the statistics of jagirs are included.

Statistics of Cultivation.

furnished by the Deputy Commissioner.)

Area out of cultivation (old fallow).	OCCUPIED AREA.			Total occupied area.	KHARIF CROPS.		
	Area in cultivation.				Cotton.	Juar.	YEAR
	New fallow.	Under crop.	Total.				
8	9	10	11	12	13	14	15
Acres.	Acres.	Acres.	Acres.	Acres.	Acres.	Acres.	
292,648	10,687	480,191	490,878	792,526	41,632	109,195	At 30 years' settlement.
32,698	123,614	696,903	820,517	853,215	55,778	111,401	1891-92
41,975	112,551	714,681	827,232	869,207	30,099	119,392	1892-93
52,035	131,510	701,400	832,910	884,045	34,928	107,018	1893-94
48,991	112,192	697,409	809,601	858,592	54,472	102,992	At last settlement.
48,982	134,634	710,296	844,930	893,862	43,710	147,143	1894-95
47,777	160,476	693,054	853,530	901,307	36,466	156,191	1895-96
47,814	204,049	657,367	861,416	909,230	46,687	174,100	1896-97
47,708	180,189	691,617	871,806	919,509	45,520	185,745	1897-98
51,217	157,929	720,544	878,473	929,690	44,545	173,377	1898-99
50,793	272,500	608,634	881,134	931,927	52,546	181,468	1899-1900
101,736	273,397	782,042	1,055,439	1,157,175	64,525	204,670	1900-01

Chhindwara District.

TABLE No. 7.—General

(This Table has been compiled from information

YEAR.	Total area.	Government forests.	Village area.	UNOCCUPIED AREA.		
				Tree-forest, scrub-jungle and grass.	Groves, water, hill and rock, and roads and buildings.	Total.
1	2	3	4	5	6	7
	Acres.	Acres.	Acres.	Acres.	Acres.	Acres.
1901-02	2,963,907	423,161	2,497,377	719,344	601,795	1,321,139
1902-03	2,963,907	447,983	2,507,845	711,326	601,466	1,312,792
1903-04	2,963,907	447,880	2,508,013	821,280	596,040	1,417,326
1904-05	2,963,907	449,952	250,771	7,310,422	591,985	902,407
1905-06	2,963,907	460,572	2,500,630	806,233	588,754	1,394,987
1906-07	2,963,907	461,440	2,500,629	800,383	585,193	1,385,576
1907-08	2,963,907	463,287	2,500,620	871,746	584,270	1,256,016
1908-09	2,963,907	459,472	2,500,624	875,643	361,342	1,236,985
1909-10	2,963,907	459,472	2,500,624	875,643	361,342	1,236,985
1910-11	2,960,001	459,377	2,500,624	878,114	360,775	1,233,889
1911-12	2,963,907	459,059	2,652,037	873,522	356,237	1,359,765
1912-13	2,963,907	459,059	2,500,686	867,682	356,057	1,223,733
1913-14	2,963,907	420,201	2,500,686	871,148	356,051	1,227,199

Statistics of Cultivation—(continued).

furnished by the Deputy Commissioner.)

Area out of cultivation (old fallow).	OCCUPIED AREA.			Total occupied area.	KHARIF CROPS.		YEAR.
	Area in cultivation.				Cotton.	Juar.	
	New fallow.	Under crop.	Total.				
8	9	10	11	12	13	14	15
Acres.	Acres.	Acres.	Acres.	Acres.	Acres.	Acres.	
116,390	209,992	849,856	1,069,848	1,176,238	63,541	194,003	1901-02
121,640	194,752	878,661	1,073,413	1,195,053	72,719	200,717	1902-03
108,150	191,866	898,831	1,090,688	1,198,838	91,872	179,035	1903-04
109,788	175,870	929,640	1,105,310	1,215,098	113,780	191,179	1904-05
116,500	166,013	939,630	1,105,643	1,222,143	123,807	188,983	1905-06
120,567	175,443	939,610	1,115,053	1,235,620	100,005	194,844	1906-07
126,975	244,349	873,280	1,117,629	1,244,604	88,450	140,095	1907-08
129,022	172,099	952,805	1,124,904	1,253,926	74,083	253,648	1908-09
129,645	160,073	973,921	1,133,994	1,263,639	62,852	239,740	1909-10
130,783	166,784	969,168	1,135,952	1,266,735	78,869	126,618	1910-11
130,006	154,820	995,675	1,150,495	1,270,927	91,069	221,245	1911-12
132,563	159,263	965,127	1,144,390	1,276,953	89,591	205,125	1912-13
130,917	157,338	968,232	1,142,570	1,273,487	95,452	200,444	1913-14

7034

Chhindwara District.

TABLE No. 7.—General

(This Table has been compiled from information

YEAR.	KHARIF CROPS.				RABI	
	Kolon and Kutki.	Sugar-cane.	Til (a).	Total Kharif crops.	Wheat.	Gram.
1	16	17	18	19	20	21
	Acres.	Acres.	Acres.	Acres.	Acres.	Acres.
At 30 years' settlement ..	66,425	6,175	2,897	..	168,135	63,429
1891-92	73,671	4,020	8,665	418,903	172,693	71,603
1892-93	84,895	3,611	7,893	447,961	172,999	66,759
1893-94	90,500	3,439	8,009	426,591	150,373	91,277
At last settlement ..	78,107	3,533	8,252	..	186,242	53,048
1894-95	60,611	3,543	7,631	420,035	171,401	84,545
1895-96	78,492	4,014	11,315	439,367	165,037	65,752
1896-97	73,773	3,410	17,684	462,782	136,598	42,184
1897-98	85,343	3,461	25,024	490,143	152,504	41,066
1898-99	85,584	3,183	17,814	493,548	168,334	55,427
1899-1900	91,258 ^c	2,936	24,784	488,747	83,009	24,406
1900-01	100,689	1,543	32,201	554,556	104,506	27,021

(a) This crop is grown in both the Autumn and Spring

Statistics of Cultivation—(continued).

furnished by the Deputy Commissioner.)

CROPS.	IRRIGATION.						YEAR.
	Total Rabi crops.	Area double-cropped.	Irrigated area.	No. of Irrigation tanks.	No. of Irrigation wells.	No. of ploughs.	
22	23	24	25	26	27	28	29
Acres.	Acres.	Acres.					
..	..	7,717	21,425	..	At 30 years' settlement.
281,329	3,419	8,570	10	3,891	39,720	91,252	1891-92
278,050	9,349	7,770	12	3,614	72,213	..	1892-93
286,051	11,242	5,278	12	3,660	75,249	..	1893-94
..	9,274	7,410	20	4,010	41,935	96,341	At last settlement.
299,265	9,004	5,411	12	3,537	74,548	..	1894-95
260,922	7,235	7,853	12	3,872	75,807	..	1895-96
203,872	9,087	9,282	7	7,625	80,851	..	1896-97
217,474	16,000	8,877	0	4,851	70,106	122,668	1897-98
248,049	11,053	8,456	8	4,840	76,254	108,014	1898-99
121,414	1,527	6,702	8	4,478	76,042	103,625	1899-1900
149,523	13,531	8,137	8	4,774	81,033	110,362	1900-01

seasons. The Autumn crop is the principal one.

Chhindwara District.

TABLE No 7.—General

(This Table has been compiled from information

YEAR.	KHARIF CROPS.				RABI	
	Kodon and Kutki.	Sugar- cane.	Til.	Total Kharif crops.	Wheat.	Gram.
	16	17	18	19	20	21
	Acres.	Acres.	Acres.	Acres.	Acres.	Acres.
1901-02	134,413	2,408	28,987	609,661	169,955	61,170
1902-03	138,665	2,653	35,052	642,113	166,102	63,854
1903-04	127,048	1,603	32,403	626,654	197,214	68,075
1904-05	138,768	1,529	30,838	666,555	197,766	60,860
1905-06	130,093	1,553	25,691	664,153	204,229	61,189
1906-07	127,405	1,832	24,962	647,224	218,001	64,070
1907-08	132,040	2,109	35,761	667,951	138,152	23,013
1908-09	145,805	2,326	41,212	742,914	159,127	43,841
1909-10	150,154	2,294	140,383	732,210	175,789	65,405
1910-11	137,838	2,334	34,438	679,422	204,502	69,823
1911-12	135,462	2,270	41,257	694,647	188,843	58,680
1912-13	131,142	2,461	37,462	681,016	227,817	76,360
1913-14	144,010	2,387	34,836	693,944	216,980	63,511

Statistics of Cultivation—(concluded).

furnished by the Deputy Commissioner.)

CROPS.		IRRIGATION.					YEAR.
Total Rabi crops.	Area double cropped.	Irrigated area.	No. of Irrigation tanks.	No. of Irrigation wells.	No. of ploughs.	No. of plough-cattle.	
22	23	24	25	26	27	28	29
Acres.	Acres.	Acres.					
248,924	8,729	8,289	..	4,894	45,884	117,039	1901-02
251,421	14,872	6,208	2	4,689	47,308	131,739	1902-03
284,772	12,505	6,650	4	4,603	50,935	130,785	1903-04
270,231	13,147	5,383	4	4,298	52,941	135,991	1904-05
284,538	9,061	7,811	4	4,098	53,258	180,587	1905-06
301,229	8,843	10,077	26	4,787	112,331	149,267	1906-07
210,885	5,557	12,340	10	5,644	54,774	149,445	1907-08
225,051	15,160	16,832	13	6,988	53,982	131,034	1908-09
200,595	18,885	15,025	15	7,894	56,174	148,543	1909-10
311,969	22,223	9,365	16	8,181	56,638	174,645	1910-11
315,290	23,836	6,323	52	6,007	57,561	177,874	1911-12
320,009	23,398	6,706	28	9,805	56,351	149,768	1912-13
306,979	15,691	8,085	25	9,991	56,070	149,095	1913-14

Chhindwara District.

TABLE No. 8.—Outturn of Crops (Outturn in American
(This Table has been compiled from Statement V

YEAR.	KHARIF.					
	Juar.	Tur.	Rice, broad- cast.	Rice, trans- planted.	Cotton.	Til.
	1	2	3	4	5	6
1891-92	83	98	90	..	60	45
1892-93	98	98	98	..	98	90
1893-94	120	105	90	..	98	105
1894-95	105	105	90	..	60	90
1895-96	98	90	83	75	90	60
1896-97	45	90	60	60	105	90
1897-98	120	55	157	..	87	180
1898-99	99	90	105	105	92	62
1899-1900	15	15	45	60
1900-01	100	90	83	68	110	100

Notation taking 100 to represent a Normal Crop)
of the Season and Crop Report.)

Kodon and Kutki.	Sugar- cane.	RABL.				Percentage of actual outturn of all crops taken together on Normal Outturn of Normal Area (Normal Outturn = 13.3 annas).	YEAR.
		Wheat.	Gram.	Masur.	Linseed.		
8	9	10	11	12	13	14	15
75	105	83	75	68	90	..	1801-02
60	90	75	60	68	113	77	1802-03
90	120	150	120	113	45	107	1803-04
90	120	90	90	90	15	92	1804-05
75	98	75	68	60	60	79	1805-06
15	75	98	75	60	60	50	1896-97
109	90	93	90	90	90	107	1897-98
110	82	75	75	60	70	94	1898-99
25	25	35	35	15	23	23	1899-1000
100	90	100	75	60	75	101	1900-01

Chhindwara District.

TABLE No. 8.—Outturn of Crops (Outturn in American

(This Table has been compiled from Statement V

YEAR.	KHARIF.					
	Juar.	Tur.	Rice, broadcast.	Rice, transplanted.	Cotton.	Til.
1	2	3	4	5	6	7
1901-02 ..	75	75	75	..	93	64
1902-03 ..	105	60	60	60	90	110
1903-04 ..	105	90	90	90	100	120
1904-05 ..	90	90	60	60	111	84
1905-06 ..	90	90	90	90	93	116
1906-07 ..	90	105	105	105	90	102
1907-08 ..	90	68	45	45	67	66
1908-09 ..	83	60	90	100	77	83
1909-10 ..	100	100	90	90	90	100
1910-11 ..	100	90	110	100	89	99
1911-12 ..	105	110	100	100	107	106
1912-13 ..	75	75	90	90	83	83
1913-14 ..	65	65	60	45	67	65

Notation taking 100 to represent a Normal Crop)—[concl'd.]
of the Season and Crop Report.)

Kodan and Kutki.	Sugar- cane.	RABI.				Percentage of ac- tual outturn of all crops taken together on Nor- mal Outturn of Normal Area (Normal Outturn =13·3 annas).	YEAR.
		Wheat.	Gram.	Masur.	Linseed.		
8	9	10	11	12	13	14	15
75	90	85	90	75	74	86	1901-02
105	75	120	90	90	100	127	1902-03
105	90	90	90	90	90	124	1903-04
60	90	94	90	90	93	96	1904-05
90	90	90	90	75	90	102	1905-06
75	100	89	110	60	89	96	1906-07
45	90	60	60	53	68	58	1907-08
100	75	90	83	63	84	92	1908-09
120	110	135	120	120	120	113	1909-10
110	100	107	90	96	107	113	1910-11
105	110	90	100	100	95	114	1911-12
75	90	103	100	100	100	89	1912-13
40	104	70	70	65	72	62	1912-14



Chhindwara District.

TABLE No. 9.—Loans

(This Table has been compiled from information

YEAR.	LAND IMPROVEMENT LOANS.						YEAR.
	Total amount of advances outstanding at the commencement of the year (Principal).	Advances.	Demand for collection (current and arrears). (Principal and Interest).	Total collections.		Remissions.	
				Principal.	Interest.		
1	2	3	4	5	6	7	8
	Rs.	Rs.	Rs.	Rs.	Rs.	Rs.	
1891-92	720	..	25	4	..	1891-92
1892-93 ..	695	1,814	283	270	42	..	1892-93
1893-94 ..	2,239	3,023	913	728	124	..	1893-94
1894-95 ..	5,435	1,750	2,740	2,306	314	..	1894-95
1895-96 ..	4,788	260	2,260	1,921	302	..	1895-96
1896-97 ..	3,127	..	1,684	1,366	202	..	1896-97
1897-98 ..	1,762	..	1,139	903	122	..	1897-98
1898-99 ..	859	..	704	469	57	..	1898-99
1899-1900	390	..	338	249	27	..	1899-1900
1900-01 ..	141	..	189	99	3	16	1900-01

(Principal and Interest).

furnished by the Deputy Commissioner.)

YEAR.	LAND IMPROVEMENT LOANS.						YEAR.
	Total amount of advances outstanding at the commencement of the year (Principal).	Advances.	Demand for collection (current and arrears), (Principal and Interest).	Total collections.		Remissions.	
				Principal.	Interest.		
1	2	3	4	5	6	7	8
	Rs.	Rs.	Rs.	Rs.	Rs.	Rs.	
1901-02 ..	25	314	60	41	1	..	1901-02
1902-03 ..	339	500	136	136	1902-03
1903-04 ..	703	1,250	111	111	66	..	1903-04
1904-05 ..	1,842	440	541	541	38	..	1904-05
1905-06 ..	2,103	4,330	861	671	173	17	1905-06
1906-07 ..	5,745	2,540	676	306	370	..	1906-07
1907-08 ..	7,777	42,087	748	90	69	..	1907-08
1908-09 ..	49,773	12,087	14,701	10,703	3,259	..	1908-09
1909-10 ..	50,857	9,626	18,849	12,518	3,188	..	1909-10
1910-11 ..	47,965	11,970	19,153	15,447	3,180	..	1910-11
1911-12 ..	44,488	8,300	15,205	13,379	2,623	..	1911-12
1912-13 ..	39,409	1,815	13,295	11,347	2,361	..	1912-13
1913-14 ..	39,877	11,659	11,523	9,287	2,076	..	1913-14

Chhindwara District.

TABLE No. 9.—Loans

(This Table has been compiled from information)

AGRICULTURAL LOANS.							YEAR.
YEAR.	Total amount of advances outstanding at the commencement of the year (Principal).	Advances.	Demand for collection (current and arrears), (Principal and Interest).	Total collections.		Remissions.	
				Principal.	Interest.		
1	2.	3	4	5	6	7	8
	Rs.	Rs.	Rs.	Rs.	Rs.	Rs.	
1891-02	3,400	1891-92
1892-93 ..	3,400	4,600	1,668	1,495	173	..	1892-93
1893-94 ..	6,505	11,377	3,476	2,541	321	..	1893-94
1894-95 ..	15,340	6,320	9,454	8,510	916	..	1894-95
1895-96 ..	13,150	1,940	9,603	8,496	848	..	1895-96
1896-97 ..	6,593	10,000	5,399	4,500	459	..	1896-97
1897-98 ..	12,094	19,995	11,458	5,696	383	..	1897-98
1898-99 ..	26,303	1,270	22,635	2,663	297	..	1898-99
1899-1900	24,999	5,944	24,148	3,280	578	..	1899-1900
1900-01 ..	27,663	87,030	45,008	13,756	3,961	..	1900-01

(Principal and Interest)—[concluded].

furnished by the Deputy Commissioner.)

AGRICULTURAL LOANS.							
YEAR.	Total amount of advances outstanding at the commencement of the year (Principal).	Advances.	Demand for collection (current and arrears) (Principal and Interest).	Total collections.		Remissions.	YEAR.
				Principal.	Interest.		
1	2	3	4	5	6	7	8
	Rs.	Rs.	Rs.	Rs.	Rs.	Rs.	
1901-02 ..	(a)90,453	20,308	76,537	42,382	550	..	1901-02
1902-03 ..	72,903	2,026	60,410	44,735	1,107	6	1902-03
1903-04 ..	30,188	4,791	25,224	21,951	1,162	2,541	1903-04
1904-05 ..	12,124	3,837	8,727	7,422	641	248	1904-05
1905-06 ..	8,302	5,849	6,239	5,380	466	184	1905-06
1906-07 ..	8,604	14,651	4,612	3,865	534	137	1906-07
1907-08 ..	18,123	87,275	9,331	2,718	214	..	1907-08
1908-09 ..	1,02,679	53,430	1,07,823	1,01,487	4,438	..	1908-09
1909-10 ..	54,334	15,597	40,611	34,738	3,382	..	1909-10
1910-11 ..	35,193	16,175	23,950	22,321	2,276	..	1910-11
1911-12 ..	29,047	9,785	18,861	16,730	1,831	..	1911-12
1912-13 ..	22,102	22,829	16,527	14,479	1,651	..	1912-13
1913-14 ..	30,457	49,035	17,041	12,141	1,523	72 Prl 12 Int.	1913-14

(a) Includes Rs. 1,484 not shown in previous year's accounts.

Chhindwara District.

TABLE No. 10.—Forest

(This Table has been compiled from Annual Forms Nos. 51)

YEAR.	AREA OF GOVERNMENT FORESTS.					TIMBER AND DUCE REMOV FORESTS BY AGE
	A. Class.	B. Class.		Unclassed.	Total.	Receipts.
	2	3		4	5	6
1	Sq. miles.	Sq. miles.		Sq. miles.	Sq. miles.	Rs.
1891-92	163	543		1	707	..
1892-93	163	543		1	707	..
		B-I B-II				
1893-94	163	..	5	1	707	..
1894-95	163	..	543	1	707	2,397
1895-96	163	..	543	1	707	1,064
1896-97	658	48	706	208
1897-98	656	40	..	1	706	1,249
1898-99	655	40	..	1	705	554
1899-1900	655	40	..	1	705	1,221
1900-01	662	49	..	1	712	18,281

Area and Revenue.

71 appended to the Annual Forest Reports.)

ER PRO- FROM THE ERNMENT	OTHER REVENUES.		FORMATION, PROTECTION AND IM- PROVEMENT OF FORESTS.	TOTAL.		YEAR.
	Receipts.	Charges.		Receipts.	Charges.	
7	8	9	10	11	12	13
Rs.	Rs.	Rs.	Rs.	Rs.	Rs.	
..	52,635	15,888	11,320	52,635	27,217	1891-92
..	56,577	21,681	13,810	56,577	35,491	1892-93
2,689	37,411	15,670	11,098	37,411	30,066	1893-94
2,009	39,871	15,830	15,502	42,268	34,241	1894-95
3,567	43,756	15,076	10,022	44,820	38,565	1895-96
3,049	49,745	15,574	22,300	49,953	40,923	1896-97
2,640	40,568	14,465	25,198	41,817	42,303	1897-98
3,247	48,568	14,733	22,353	49,122	40,333	1898-99
28,439	47,410	10,521	7,838	48,031	46,796	1899-1900
11,363	37,915	10,281	8,135	56,196	29,779	1900-01

Chhindwara District.

TABLE No. 10.—Forest

(This Table has been compiled from Annual Forms Nos. 51 and

YEAR.		AREA OF GOVERNMENT FORESTS.					TIMBER AND DUCE REMOV FORESTS BY AGE
		A. Class.	B. Class.		Unclassed.	Total.	Receipts.
1	2	3	4	5	6	7	
	Sq. miles.	Sq. miles.	Sq. miles.	Sq. miles.	Sq. miles.	Rs.	
1901-02	663	49	712	930	
1902-03	663	49	712	1,207	
1903-04	663	49	712	660	
1904-05	665	40	714	451	
1905-06	667	53	720	81	
1906-07	667	53	720	144	
1907-08	667	51	718	777	
1908-09	667	51	718	651	
1909-10	666	51	717	750	
1910-11	666	51	717	839	
1911-12	666	51	717	692	
1912-13	666	51	717	1,942	
1913-14	652	62	714	775	

Area and Revenue—(continued).

71 appended to the Annual Forest Reports.)

OTHER PRO- CED FROM THE GOVERNMENT NCY.	OTHER REVENUES.		FORMATION, PROTECTION AND IM- PROVEMENT OF FORESTS.	TOTAL.		YEAR.	
	Receipts.	Charges.		Receipts.	Charges.		
	8	9		10	11		12
	Rs.	Rs.	Rs.	Rs.	Rs.	Rs.	
	12,499	65,188	11,933	10,840	66,118	35,272	1901-02
	13,202	59,896	11,707	10,404	61,103	35,403	1902-03
	14,103	68,396	12,313	9,652	69,061	36,068	1903-04
	115	76,488	34,980	2,975	76,939	38,070	1904-05
	5	96,304	39,995	2,852	98,386	41,852	1905-06
	5	91,154	42,307	3,056	91,298	45,368	1906-07
	2	93,972	54,915	4,514	94,749	59,431	1907-08
	1	89,115	60,191	4,423	89,766	64,615	1908-09
	1	78,804	50,419	4,016	79,554	54,436	1909-10
	5	83,669	52,028	4,225	84,508	56,258	1910-11
	15	97,801	29,645	20,942	98,493	50,602	1911-12
	543	1,60,221	54,955	2,752	1,62,163	58,250	1912-13
	109	1,87,328	61,523	1,961	1,88,103	63,593	1913-14



Chhindwara District.

**TABLE No. 11.—Retail Prices (in seers per rupee) of the
at the Head-**

(This Table has been compiled from the *Supple*)

YEAR.			HEAD-QUARTERS				
			<i>District Staple Food-</i>				
			January.	February.	March.	April.	May.
1			2	3	4	5	6
1891	28-8	28-8	24-7	20-6	21-1
1892	15-2	14-4	14-4	14-4	14-4
1893	17-6	15-2	13-7	13-7	15-2
1894	28-0	28-0	28-0	20-4	28-0
1895	19-3	18-0	18-0	16-4	17-0
1896	16-6	17-3	18-0	16-3	14-7
1897	12-0	10-7	10-0	9-0	9-0
1898	18-0	18-0	22-0	22-0	20-6
1899	25-5	23-0	23-0	23-0	23-0
1900	9-6	9-0	9-0

District Staple Food-grain for each month of the decade quarters Town.

ment to the *Central Provinces Gazette.*)

FOWN—CHHINDWARA.

rain—JUAN.

June.	July.	August.	Septem- ber.	October.	Novem- ber	December.	Average. for the year.	YEAR.
7	8	9	10	11	12	13	14	15
20.6	20.6	20.6	19.3	16.2	18.0	14.4	21.1	1801
13.2	12.0	12.0	12.0	13.2	13.7	16.0	13.7	1802
16.0	18.0	17.0	17.0	18.0	19.3	28.9	17.4	1803
24.0	24.0	24.0	24.0	22.3	20.6	22.3	25.5	1804
16.4	16.0	14.5	12.1	14.4	15.2	16.3	16.1	1805
14.7	14.4	14.4	13.2	12.8	12.5	14.2	14.0	1806
8.0	8.0	..	6.8	..	14.0	18.0	10.6	1807
22.0	22.5	23.5	23.0	24.0	24.0	25.5	22.1	1808
23.0	21.5	17.0	14.0	10.5	0.2	9.0	18.6	1800
..	16.2	21.5	13.1	1900

Chhindwara District.

TABLE No. 11.—Retail Prices (in seers per rupee) of the
at the Head-
 (This Table has been compiled from the Supple

YEAR.				HEAD-QUARTERS				
				<i>District Staple Food.</i>				
				January.	February.	March.	April.	May.
1	2	3	4	5	6			
1901	20·0	20·0	18·0	19·0	18·5		
1902	18·0	18·0	17·5	17·0	17·0		
1903	20·6	20·6	24·0	24·0	24·0		
1904	28·8	28·8	28·0	28·0	28·8		
1905	24·0	24·0	24·0	24·0	24·0		
1906	16·3	16·0	18·0	18·0	17·0		
1907	18·0	18·0	18·0	19·0	19·0		
1908	9·5	9·5	9·5	8·4	8·4		
1909	13·8	13·8	14·8	13·2	12·1		
1910	19·0	20·7	20·7	19·0	21·7		
1911	25·33	19·00	25·33	25·33	25·33		
1912	25·33	19·00	19·00	19·00	19·00		
1913	15·20	12·66	12·66	12·66	15·0		
1914	11·87	11·85	10·70	10·70	10·70		

**District Staple Food-grain for each month of the decade
quarters Town—(concluded).
ment to the Central Provinces Gazette.)**

Town—CHHINDWARA.

grain—JWAR.

June.	July.	August.	Septem-ber.	October.	Novem-ber.	Decem-ber.	Average for the year.	YEAR.
7	8	9	10	11	12	13	14	15
18.0	16.0	17.0	18.0	18.0	18.0	19.0	18.3	1901
15.0	14.0	19.3	20.6	17.4	1902
24.0	28.4	28.4	28.4	32.0	36.0	28.8	26.4	1903
28.0	28.8	24.0	21.60	21.60	21.60	21.00	25.58	1904
24.0	24.0	24.0	20.5	20.5	20.5	17.0	22.56	1905
17.0	18.0	18.0	18.0	18.0	18.0	18.0	17.52	1906
15.2	15.2	13.8	12.6	10.8	12.6	10.1	15.17	1907
8.4	8.4	8.4	9.5	10.8	10.8	12.0	9.38	1908
11.2	10.8	10.8	10.8	10.8	17.0	10.0	13.21	1909
21.7	25.3	25.3	25.3	25.3	25.3	25.3	22.91	1910
25.33	21.33	19.00	19.00	19.00	19.00	25.33	22.56	1911
19.00	19.00	19.00	15.20	19.0	15.20	15.20	18.58	1912
12.66	12.66	12.66	12.66	12.66	17.87	14.25	13.15	1913
9.50	9.50	9.50	9.50	10.70	13.06	16.60	11.18	1914

Chhindwara District.

TABLE No. 12.—Wages (monthly
(This Table has been compiled from the informatio

YEAR.		HEAD-QUARTER:						
		<i>Retail Prices (in seers per rupee).</i>						
		Wheat.	Common rice.	Cotton.	Kodon or Kutki.	Linseed.	Gram.	
1	2	3	4	5	6	7		
1801	16.1	10.3	2.2	17.3	10.7	18.3	
1892	11.3	10.0	2.3	13.9	9.1	12.7	
1803	14.0	10.0	1.9	15.8	9.4	10.4	
1804	15.6	10.8	2.1	12.7	9.2	23.4	
1895	13.0	10.3	2.1	14.9	9.0	16.5	
1896	12.0	9.7	2.2	14.1	9.1	13.7	
1897	8.7	7.1	2.8	11.5	7.0	8.9	
1898	13.0	10.2	3.0	16.5	..	16.3	
1899	13.3	11.6	2.9	16.3	..	16.3	
1900	8.5	9.5	2.3	14.6	..	8.0	

and Retail Prices (in seers per rupee).
furnished by the Deputy Commissioner.)

TOWN—CHHINDWARA.

Salt.	<i>Wages (monthly).</i>				YEAR.
	Ablo-bodied agricultural labourer.	Common mason.	Common carpenter.	Common blacksmith.	
8	9	10	11	12	13
	Rs. a.	Rs. a.	Rs. a.	Rs. a.	
8-3	}	Not available.			1891
8-2					1892
8-0	5 0	15 0	15 0	15 0	1893
8-3	5 0	15 0	15 0	15 0	1894
8-7	4 8	15 0	15 0	15 0	1895
8-7	5 0	15 0	15 0	15 0	1896
8-6	4 0	15 0	15 0	15 0	1897
8-6	4 8	16 4	16 4	16 4	1898
8-2	4 0	15 0	15 0	15 0	1899
8-3	4 8	15 0	15 0	15 0	1900

Chhindwara District.

TABLE No. 12.—Wages (monthly)

(This Table has been compiled from the information

HEAD-QUARTERS

YEAR.	Retail Prices (in <i>seers</i> per <i>rupes</i>).						
	Wheat.	Common rice.	Cotton.	Kodon or Kutki.	Linseed.	Gram.	
	1	2	3	4	5	6	7
1901	12.2	9.7	3.0	14.6	..	12.4	
1902	12.5	11.2	2.0	16.0	..	15.6	
1903	16.0	9.2	2.4	19.0	..	20.2	
1904	15.20	13.33	2.0	16.0	..	19.0	
1905	12.00	11.42	1.77	13.33	..	13.44	
1906	13.81	11.42	2.0	12.66	
1907	8.4	6.46	1.7	7.4	..	9.5	
1908	8.0	10.0	..	11.7	..	8.44	
1900	12.25	9.43	2.0	12.25	..	11.3	
1910	12.73	10.50	1.0	14.90	..	18.67	
1911	15.00	12.00	..	16.40	..	21.71	
1912	13.11	10.89	..	14.86	..	15.67	
1913	12.15	9.04	..	10.14	..	13.67	
1914	9.27	8.18	..	9.98	..	9.74	

and Retail Prices (in seers per rupee)—[concluded].
furnished by the Deputy Commissioner).

Town—CHHINDWARA.

Wages (monthly).					YEAR.
Salt.	Able-bodied agricultural labourer.	Common mason.	Common carpenter.	Common blacksmith.	
8	9	10	11	12	13
	Rs. a.	Rs. a.	Rs. a.	Rs. a.	
8-3	4 0	15 0	15 0	15 0	1901
8-8	4 8	15 0	15 0	15 0	1902
9-3	4 0	15 0	15 0	15 0	1903
9-14	7 0	15 0	15 0	15 0	1904
12-8	7 0	Rs. 15 to 20	Rs. 15 to 20	Rs. 15 to 20	1905
12-8	Rs. 6 to 7	Rs. 15 to 25	Rs. 15 to 25	Rs. 15 to 25	1906
16-0	8 0	20 0	20 0	20 0	1907
16-0	Rs. 3 to 6	Rs. 15 to 25	Rs. 15 to 25	Rs. 15 to 25	1908
15-48	Rs. 3 to 6	Rs. 15 to 25	Rs. 15 to 25	Rs. 15 to 25	1909
16-0	6 0	25 0	25 0	25 0	1910
16-00	6 0	25 0	25 0	25 0	1911
16-00	7 8	30 0	39 6	39 6	1912
16-00	7 8	Rs. 20 to 30	Rs. 20 to 40	Rs. 30 to 50	1913
14-83	8 0	Rs. 25 to 35	Rs. 30 to 40	Rs. 30 to 40	1914



Chhindwara District.

TABLE No. 13.—Railway Stations.

Name of Railway line.	Name of Railway Station on each Railway line.	Distance of each Station from Chhindwara (miles).	REMARKS.
	2	3	4
	Chhindwara	
Neinpur-Seoni-Chhindwara Section of the Satpura Branch of Bengal-Nagpur Railway.	Jhilmili ..	12½	
	Chaurai ..	21½	
	Chhindwara-Barkuhi line of B.N. Ry.	Khirsadoh .. Barkuhi ..	17 22
Chhindwara-Nagpur line of B.N. Ry.	Linga ..	8	
	Umra Nalla ..	16	
	Kukrakhapa ..	23	
	Bhimalgondi ..	32	
	Ramakona ..	39	
	Sausar ..	43	
Ladhikhera ..	50		
Parasia-Itarsi line of G.I.P. Ry.	Parasia ..	18	
	Iklehra ..	22	
	Junnoredeo ..	30	
	Hirdagarh ..	36½	
	Nawegaon ..	45½	

Chhindwara District.

TABLE No. 14.—Roads maintained by the Public Works and Inspection Bungalows, and Encamping

Class.	Name of Road.	Length (in miles).	FERRIES.	
			Name.	Distance from Chhindwara (miles).
1	2	3	4	5
I	1. Chhindwara Station Roads ..	3½
	2. Chhindwara-Matkuli Road from mile 1 to mile 6 furlong 4 and miles 10 to 65½.	53½
	3. Chhindwara-Narsinghpur Road	04½
	4. Chhindwara-Multai ..	29½
	5. Seoni-Chhindwara ..	30½
	6. Saoner-Chhindwara ..	45½	Kanhai River Jam River ..	M. F. 25—4 28—7
	7. North-West Road ..	27½
II-A.	8. Pandurna-Wardha River Road..	7
	9. Ramakona Railway Feeder Rd.	½
	10. Chhindwara-Matkuli from mile 6 4th furlong to 18th.	11½
	11. Chhindwara Station Roads ..	6½
	12. Ladhikhera Railway Feeder Rd.	½
	13. Linga Railway Feeder Road ..	½
	14. Umrana Do. ..	½
15. Sauser Do. ..	¾	
II-B	16. Harrai-Tamia:— Harrai-Khapa Section 17 miles. Chhindi-Tamia Section 11½ ..	28½
	17. Khairi-Talgaon-Ladhikhera ..	3½
	18. Chowrai-Khapa First Section of Chowrai-Khamarpani Road.	15
	III	19. Chhindwara-Bordehi (Betul) via Umreth and Bhatoria.	39	..
20. Nandia Kua Badla ..		15

NOTE.—The last 4 roads are under the District Council.

Chhindwara District.

TABLE No. 14.—Other Local Roads and Ferries maintained by the District Council.

No.	ROADS.		FERRIES (PUBLIC).	
	Name.	Length (in miles).	Place where situate.	River which is crossed.
1	2	3	4	5
<i>Chhindwara Tahsil.</i>				
1	Chhindwara-Bordehi (Betul) <i>via</i> Umroth and Bhatoria.	39	Palatwara	Pench River
2	Nandia Kua Badla	15
<i>Sausar Tahsil.</i>				
1	Khairi-Taigoon-Ladhikhora	3½	Ambari Karnakari Matni Myendi	Kanhau. Do. Do. Do.
<i>Amarwara Tahsil.</i>				
1	Chowrai Khapa — First Section of Chowrai-Khamarpani Road.	15	Badagon Bediwara Chandghat	Pench. Do. Kulbehra.

Chhindwara District.

TABLE No. 15.—Post and Telegraph Offices.

(This Table has been compiled from information furnished by the Deputy Postmaster-General and the Chief Superintendent of Telegraphs.)

Distributing and collecting centres, Head Offices.	Distributing and collecting centres, Sub-Offices.	Branch Offices.	Remarks showing how each Branch Office is served.
1	2	3	4
		<i>Post Offices.</i>	
	1. <i>Chhindwara.</i>	Bichwa .. Bijhwada .. Chand .. <i>Chaurai</i> .. <i>Jhilmili</i> .. Kapurda .. Khamarpau .. Kunda .. <i>Linga</i> .. Mohkher .. Rohna .. Singhori .. Ubhegaon .. <i>Umranala</i> ..	Head Office Jubbulpore. These Branch Offices are in account with Chhindwara Sub-Office, and are served through runners' lines, except those italicised which are on the Railway.
	2. <i>Chhinvasigunj.</i> (Chhindwara).		Collecting Office only.
	3. <i>Amarwara.</i>	Batkagarh Khapa .. Dhanora .. Harrai .. Soja ..	Head Office Jubbulpore; runners' line to Chhindwara.
	4. <i>Pench</i>	<i>Bhatodi</i> .. Bijori .. Chaulpani .. Delakhari .. <i>Ehlehra</i> .. Pagara .. Tania .. Umreth .. <i>Jamsi</i> .. Jhirpa ..	Head Office Jubbulpore. These are on runners' line. Pench is situated near Khirsadoh Railway Station.
	5. <i>Sausar</i>	Bardi .. Lodhikhera .. Mohgaon .. Paradsingha .. Pipla .. Ramakona ..	Head Office Nagpur. Sausar, Lodhikhera and Ramakona are on the railway. Paradsingha is connected by a runner's line with Lodhikhera Branch Office. The rest are connected with runners' line with Sausar.
	6. <i>Pandhurna.</i>	Chicholi .. Secni (Chhindwara) .. Tigon ..	Head Office Nagpur. Pandhurna is connected by runners' line with Secner Sub-Office (Nagpur District). Chicholi, Secni and Tigon are served by runners' line with Pandhurna.

Telegraph Offices—(concluded).

Name.	Class.	REMARKS.
<i>Telegraph Offices.</i>		
Chhindwara II Class Opened from 7 to 19.
Chitnavisgunj III Class Only a receiving office, open from 7 to 10 and from 13 to 17.
Penoh Do. Open from 7 to 10 and from 13 to 17.
Sausar Combined

Chhindwara District.

TABLE No. 16.—Crime.

(This Table has been taken from information furnished by the District Superintendent of Police.)

YEAR.	PERSONS CONVICTED OR BOUND OVER IN RESPECT OF—										YEAR.		
	Rioting and unlawful assem- blv.	Offences affect- ing human life.	Grievous hurt.	Cattle-theft.	Robbery and dacoity.	House-breaking and theft.	Offences relating to coin.	Bad livelihood.	Cases under Opium Act.	Cases under Ex- cise Act.		Cases under For- est Act.	
1	2	3	4	5	6	7	8	9	10	11	12	13	
1891	Not available.	10	1891	
1892	32	3	56	3	372	..	10	2	10	25	1892
1893	17	18	38	1	264	1	34	11	1893
1894	25	10	33	4	266	11	26	29	1894
1895	10	5	45	..	262	1	..	2	18	8	1895
1896	..	8	15	12	78	51	317	1	..	2	14	13	1896
1897	..	13	30	8	250	97	614	3	14	70	1897
1898	..	19	15	12	35	..	138	3	24	38	1898
1899	..	2	23	10	22	12	234	1	1	..	38	95	1899
1900	..	3	21	2	208	8	471	2	11	79	1900

Chhindwara District.

TABLE No. 16.—Crime—(concluded).

(This Table has been taken from information furnished by the District Superintendent of Police.)

YEAR.	PERSONS CONVICTED OR BOUND OVER IN RESPECT OF—											YEAR.
	Rioting and un-lawful assembly.	Offences affecting human life.	Grievous hurt.	Cattle-theft.	Robbery and dacoity.	House-breaking and theft.	Offences relating to coin.	Bad livelihood.	Cases under Opium Act.	Cases under Ex-cise Act.	Cases under For-est Act.	
1	2	3	4	5	6	7	8	9	10	11	12	13
1901 ..	12	17	4	33	11	101	2	37	34	1901
1902 ..	33	45	5	32	4	95	1	..	0	39	52	1902
1903 ..	24	15	12	26	10	73	..	3	2	43	57	1903
1904 ..	20	9	11	13	1	67	1	00	31	1904
1905 ..	31	9	4	28	1	63	..	2	..	32	0	1905
1906	13	7	12	..	16	..	3	2	60	..	1906
1907 ..	42	35	19	27	5	96	1	30	..	1907
1908 ..	8	5	9	67	3	226	3	24	..	1908
1909 ..	33	36	5	33	3	143	..	5	..	36	2	1909
1910	7	10	17	2	92	..	5	..	29	..	1910
1911 ..	1	3	9	16	4	82	..	14	..	15	..	1911
1912 ..	11	12	4	24	..	94	..	4	2	82	36	1912
1913 ..	18	8	8	28	1	163	..	6	2	81	92	1913
1914 ..	6	15	14	37	..	128	4	5	2	105	130	1914

Chhindwara District.

TABLE No. 17.—Criminal Justice.

(This Table has been taken from information furnished by the District Superintendent of Police.)

YEAR.	COGNIZABLE CRIME.						NON-COGNIZABLE CRIME.				YEAR.
	Cases reported.	Cases investigated.	Cases sent up for trial.	Persons tried.	Persons acquitted or discharged.	Persons convicted.	Total cases for disposal.	Cases dismissed without trial.	Cases ending in discharge or acquittal.	Cases ending in conviction.	
1	2	3	4	5	6	7	8	9	10	11	12
1891	Not available.			1891
1892	1,022	731	477	760	162	598	444	35	1892
1893	769	713	407	580	122	458	391	2	1893
1894	777	628	421	663	223	440	324	7	1894
1895	888	648	421	597	192	405	246	5	1895
1896	1,254	784	776	778	214	564	259	1896
1897	1,855	1,180	744	1,497	363	1,134	355	7	189	149	1897
1898	777	577	390	558	196	362	442	44	180	204	1898
1899	1,071	806	506	728	63	665	531	30	170	186	1899
1900	1,575	1,051	738	1,040	167	873	358	23	76	140	1900

Chhindwara District.

TABLE No. 17.—Criminal Justice—(concluded).

(This Table has been taken from information furnished by the District Superintendent of Police.)

YEAR.	COGNIZABLE CRIME.						NON-COGNIZABLE CRIME.					YEAR.
	Cases reported.	Cases investigated.	Cases sent up for trial.	Persons tried.	Persons acquitted or discharged.	Persons convicted.	Total cases for disposal.	Cases dismissed without trial.	Cases ending in discharge or acquittal.	Cases ending in conviction.		
1	2	3	4	5	6	7	8	9	10	11	12	
1901	900	683	514	649	154	405	458	52	118	104	1901	
1902	1,098	777	538	722	165	557	500	14	213	189	1902	
1903	1,004	753	598	749	121	610	Not available.				1903	
1904	951	707	542	712	189	516	950	211	233	168	1904	
1905	839	566	375	493	102	383	1,045	165	695	116	1905	
1906	834	536	328	395	98	297	1,019	240	556	125	1906	
1907	802	470	244	408	107	297	881	116	294	165	1907	
1908	1,253	687	372	628	164	431	Not available				1908	
1909	1,192	638	366	613	180	398	650	71	312	150	1909	
1910	928	531	271	432	140	244	578	89	162	113	1910	
1911	1,108	463	239	403	139	238	795	189	210	193	1911	
1912	1,091	441	224	326	81	210	1,004	310	185	175	1912	
1913	1,127	635	311	439	81*	315	1,084	225	255	201	1913	
1914	1,294	797	320	452	155	329	1,214	238	268	296	1914	

Chhindwara District.

TABLE No. 18.—Civil and Revenue Business.

(This Table has been compiled from information furnished by the District Judge.)

YEAR.				CIVIL SUITS.		Number of suits between landlord and tenant.	YEAR.
				Number of suits instituted.	Average value.		
1				2	3	4	5
				Rs.			
1891	3,011	101	286	1891
1892	3,399	112	284	1892
1893	3,249	93	256	1893
1894	3,154	103	281	1894
1895	3,647	120	400	1895
1896	3,172	134	424	1896
1897	2,912	138	345	1897
1898	3,125	134	369	1898
1899	2,811	107	562	1899
1900	2,250	154	325	1900

Chhindwara District.

TABLE No. 18.—Civil and Revenue Business—(concluded).
(This Table has been compiled from information furnished by the District Judge.)

YEAR.	CIVIL SUITS.				Number of suits between landlord and tenant.	YEAR.
	SUB-DIVISIONAL COURTS.		DISTRICT COURTS.			
	Number of suits instituted.	Average value.	Number of suits instituted.	Average value.		
1	2	3	4	5	6	7
		Rs.		Rs.		
1901 ..	2,332	51	635	423	430	1901
1902 ..	2,660	51	714	571	487	1902
1903 ..	2,678	50	704	301	306	1903
1904 ..	2,467	58	842	412	264	1904
1905 ..	2,606	35	981	277	242	1905
1906 ..	3,596	36	952	337	210	1906
1907 ..	4,316	58	291	868	200	1907
1908 ..	4,533	61	415	850	166	1908
1909 ..	4,950	59	470	873	291	1909
1910 ..	5,737	73	621	1,167	341	1910
1911 ..	3,667	83	1,063	249	373	1911
1912 ..	2,684	124	1,923	134	218	1912
1913 ..	2,134	92	2,347	225	206	1913
1914 ..	2,733	69	1,105	580	222	1914

Chhindwara District.

TABLE No. 19.—Land Revenue and Cesses (total of all kinds of Land Revenue).

(This Table has been compiled from information supplied by the Deputy Commissioner.)

YEAR.	Current year's demand according to Kistbandi and figures of demand for Land Revenue not on the roll and Miscellaneous Revenue.	Remissions of current year's demand granted during the year.	Suspensions of current year's demand granted during the year.	Total collections during the year (excluding advance collections.)	Advance collections adjusted during the year.	TOTAL BALANCE.		Remissions granted on account of balance from previous years.	YEAR.
						Suspended.	Un-suspended.		
1	2	3	4	5	6	7	8	9	10
	Rs.	Rs.	Rs.	Rs.	Rs.	Rs.	Rs.	Rs.	
1891-92 ..	2,35,701	150	..	2,34,972	14	..	573	..	1891-92
1892-93 ..	2,35,711	2,35,642	119	..	464	59	1892-93
1893-94 ..	2,36,089	201	..	2,35,141	73	..	1,065	73	1893-94
1894-95 ..	2,36,584	2,36,480	217	..	563	388	1894-95
1895-96 ..	2,99,854	2,99,002	331	..	1,054	30	1895-96
1896-97 ..	3,16,555	2,73,917	226	..	43,247	218	1896-97
1897-98 ..	3,20,606	3,30,947	284	..	32,670	42	1897-98
1898-99 ..	3,20,627	196	..	3,21,554	381	..	30,293	872	1898-99
1899-1900	3,21,502	..	1,47,048	1,56,502	499	1,47,048	50,807	..	1899-1900
1900-01 ..	3,20,717	3,94,742	168	70,217	32,472(a)	19,973	1900-01

(a) This amount is reduced by Rs. 999, on account of errors corrected in the following year.

Chhindwara District.

TABLE No. 19.—Land Revenue and Cesses (total of all kinds of Land Revenue)—[concluded].

(This Table has been compiled from information supplied by the Deputy Commissioner).

YEAR.	Current year's demand according to Kistbandi and figures of demand for Land Revenue not on the roll and Miscellaneous Revenue.	Remissions of current year's demand granted during the year.	Suspensions of current year's demand granted during the year.	Total collections during the year (excluding advance collections.)	Advance collections adjusted during the year.	TOTAL BALANCE.		Remissions granted on account of balance from previous years.	YEAR.
						Suspended.	Un-suspended.		
1	2	3	4	5	6	7	8	9	10
	Rs.	Rs.	Rs.	Rs.	Rs.	Rs.	Rs.	Rs.	
1901-02 ..	3,24,217	7,202	..	3,28,085	759	..	28,358	62,502	1901-02
1902-03 ..	3,25,059	11	..	3,47,617	2,739	..	2,681	955	1902-03
1903-04 ..	3,24,337	58	2,003	3,22,188	1,425	2,114	1,230	1,228	1903-04
1904-05 ..	3,27,248	3,29,334	30	1904-05
1905-06 ..	3,25,428	49	..	3,25,377	2	1905-06
1906-07 ..	3,26,040	559	..	3,24,534	513	..	434	..	1906-07
1907-08 ..	3,30,400	..	81,059	2,49,341	394	81,059	1907-08
1908-09 ..	3,25,851	927	..	3,24,694	230	1908-09
1909-10 ..	3,27,073	49	..	3,26,419	605	1909-10
1910-11 ..	3,08,815	50	..	3,07,699	1,114	1910-11
1911-12 ..	3,09,955	3,660	..	3,05,476	819	1911-12
1912-13 ..	3,16,562	3,449	..	3,12,683	430	1912-13
1913-14 ..	3,20,565	202	18,187	3,01,775	401	18,187	1913-14

Chhindwara District.

CHHINDWARA TAHSIL.

TABLE No. 19(a).—Land Revenue and Cesses by Tahsils (a).

(This Table has been compiled from information supplied by the Deputy Commissioner.)

YEAR.	Current year's demand according to Kistbandi (Land Revenue on the roll and Cesses.)	Total collections during the year.	Total Balance.	YEAR.
1	2	3	4	5
	Rs.	Rs.	Rs.	
1901-02	1,86,303	1,70,694 (b)	15,609	1901-02
1902-03	1,86,353	1,85,608	745	1902-03
1903-04	1,86,339	1,84,225	2,114	1903-04
1904-05	1,86,283	1,86,283	..	1904-05
1905-06	1,82,414	1,82,414 (c)	..	1905-06
1906-07	1,82,380	1,82,360 (d)	..	1906-07
1907-08	1,82,283	1,07,730 (e)	74,424 (f)	1907-08
1908-09	1,81,602	1,81,375	.. (g)	1908-09
1909-10	1,82,263	1,82,263	..	1909-10
1910-11	1,81,300	1,81,300	..	1910-11
1911-12	1,79,376	1,79,376	..	1911-12
1912-13	96,329	96,329	..	1912-13 †
1913-14	A 98,695	B 91,609	* 7,086	1913-14

(a) The totals of the tahsil accounts will not necessarily correspond with the district accounts, because suspensions and remissions and corrections in the statements are frequently not brought on to the tahsil accounts in the year to which they refer. The figures in the tahsil tables also not include Land Revenue not on the roll and Miscellaneous Land Revenue.

(b) Includes Rs. 3,447 subsequently remitted. .

(c) " " 49 remitted.

(d) " " 56 " "

(e) Rs. 129 collected in previous year excluded.

(f) Suspended.

(g) Rs. 227 collected in the year adjusted during 1908-09.

A.—Excludes Rs. 240 collected in advance during previous year.

B.—Excludes Rs. 141 collected in advance during the year.

* Suspended.

† Excludes Amarwara Tahsil which has been noted on separate sheet.

Chhindwara District.

SAUSAR TAHSIL.

TABLE No. 19(b).—Land Revenue and Cesses by Tahsils(a)—
(concluded).

(This Table has been compiled from information supplied by the Deputy Commissioner.)

YEAR.	Current year's demand according to Kistbandi (Land Revenue on the roll and Cesses.)	Total collections during the year.	Total Balance.	YEAR.
1	2	3	4	5
	Rs.	Rs.	Rs.	
1901-02	1,32,020	1,31,261 (b)	750	1901-02
1902-03	1,32,020	1,32,020	..	1902-03
1903-04	1,32,021	1,32,010	2	1903-04
1904-05	1,32,020	1,32,000	..	1904-05
1905-06	1,29,527	1,29,527	..	1905-06
1906-07	1,29,533	1,29,099 (c)	424	1906-07
1907-08	1,29,551	1,25,056	4,495 (d)	1907-08
1908-09	1,29,278	1,29,278	..	1908-09
1909-10	1,29,479	1,29,479	..	1909-10
1910-11	1,29,317	1,29,317	..	1910-11
1911-12	1,28,298	1,28,298	..	1911-12
1912-13	1,28,419	1,28,419	..	1912-13
1912-14	A 1,29,254	B 1,23,593	C 5,661	1912-14

(a) The totals of the tahsil accounts will not necessarily correspond with the district accounts, because suspensions and remissions and corrections in the statements are frequently not brought on to the tahsil accounts in the year to which they refer. The figures in the tahsil tables also do not include Land Revenue not on the roll and Miscellaneous Land Revenue.

(b) Includes Rs. 3,755 subsequently remitted.

(c) " " 3.

(d) Suspended.

A.—Excludes Rs. 102 collected in advance in previous year.

B.—Excludes Rs. 364 collected in advance during the year.

C.—Is the suspended arrears.

Chhindwara District.

AMARWARA TAHSIL.

TABLE No: 19(c).—Land Revenue and Cesses by Tahsils.

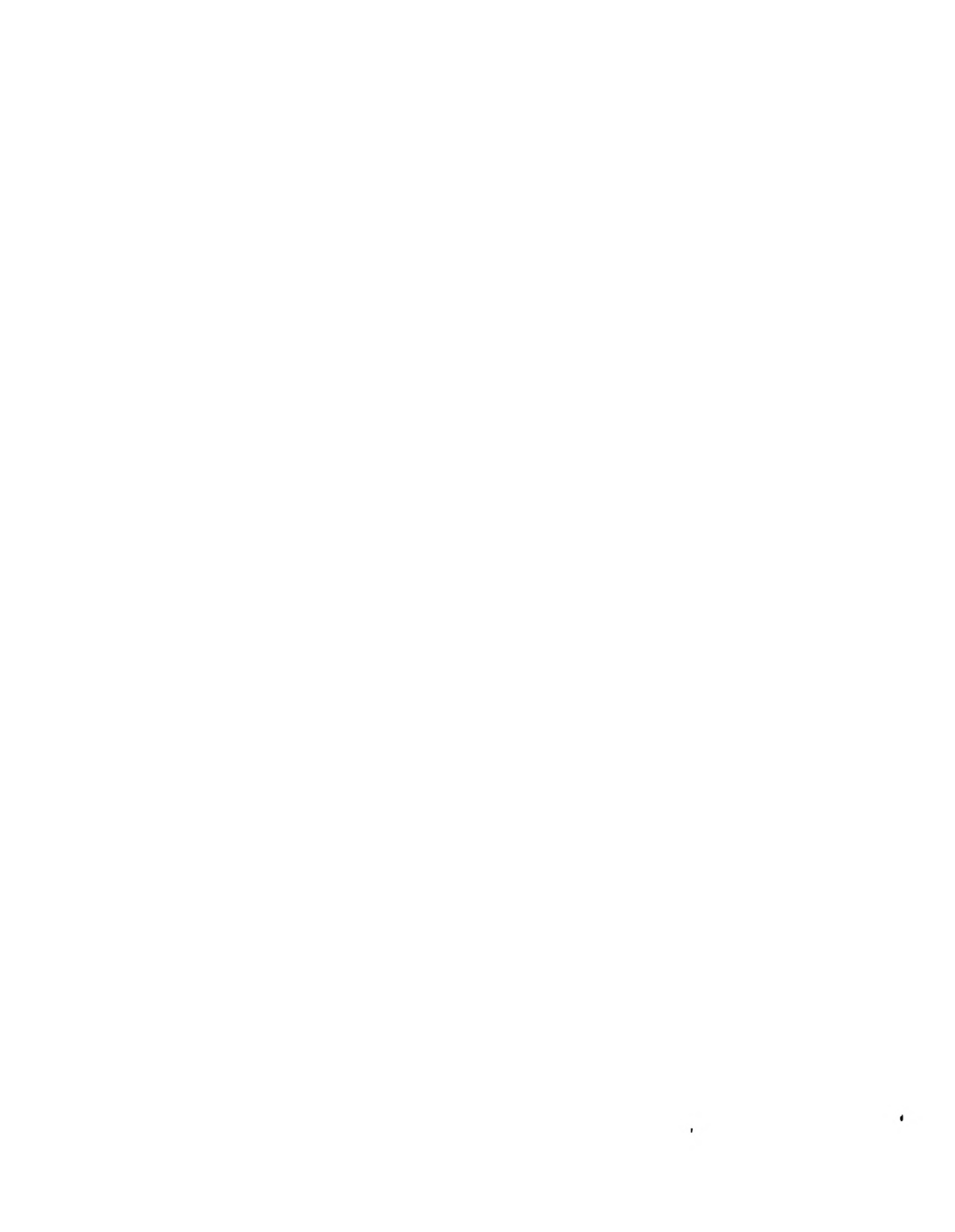
(This Table has been compiled from information supplied by the Deputy Commissioner.)

YEAR.	Current year's demand according to Kistbandi (Land Revenue on the roll and Cesses.)	Total collections during the year.	Total Balance.	YEAR.
1	2	3	4	5
1912-13	83,424	83,424	..	1912-13
1913-14	A 83,294	B 79,686	C 3,598	1913-14

A.—Excludes Rs. 63 collected in advance during the previous year.

B.—Excludes Rs. 55 collected in advance during the current year.

C.—Is the suspended arrears.



Chhindwara District.

TABLE No. 20.—

(This Table has been taken from Imperial

YEAR.	RECEIPTS						
	Imported liquors.	COUNTRY SPIRITS AND FERMENTED LIQUORS.					
		Duty.	Vend fees.	Outstill receipts.	Total country spirits.	Tari license fees.	Total country spirits and fermented liquors.
1	2	3	4	5	6	7	8
	Rs.	Rs.	Rs.	Rs.	Rs.	Rs.	Rs.
1891-92	1,410	7,440	83,030	91,880	..	91,880
1892-93	1,015	6,308	78,893	86,216	..	86,216
1893-94	94	2,000	6,250	71,523	79,863	..	79,863
1894-95	50	1,410	5,295	69,292	75,997	..	75,997
1895-96	68	1,270	6,390	66,635	74,295	..	74,295
1896-97	75	910	6,072	60,598	67,580	..	67,580
1897-98	94	1,870	2,500	59,753	64,123	..	64,123
1898-99	56	1,934	2,138	58,842	62,914	..	62,914
1899-1900	75	1,423	3,038	80,487	84,948	..	84,948
1900-01	94	1,814	3,300 ^c	58,995	62,109 ^a	..	62,109

(a) Excludes Zamindari takolis

Excise (a).

Form I attached to Excise Administration Reports.)

FROM :—

OPIUM.			GANJA AND BEANG.			YEAR.
Duty.	License fees.	Total.	Duty.	License fees.	Total.	
9	10	11	12	13	14	15
Rs.	Rs.	Rs.	Rs.	Rs.	Rs.	
22,110	16,025	38,135	3,310	7,768	11,078	1891-92
22,338	12,350	34,688	2,912	7,599	10,511	1892-93
21,447	13,599	35,046	2,778	6,241	9,019	1893-94
21,194	13,553	34,747	2,893	6,273	9,166	1894-95
21,322	11,367	32,689	2,816	5,284	8,100	1895-96
18,813	9,046	27,859	2,850	4,042	6,892	1896-97
18,450	10,679	29,129	2,966	3,700	6,666	1897-98
19,601	8,950	28,551	3,456	2,878	6,334	1898-99
20,278	9,326	29,604	3,392	3,680	7,072	1899-1900
19,002	9,793	28,795	3,416	3,239	6,655	1900-01

and Miscellaneous Revenue.

Chhindwara District.

TABLE No. 20.—

(This Table has been taken from Imperial

RECEIPTS							
COUNTRY SPIRITS AND FERMENTED LIQUORS.							
YEAR.	Imported liquors.	Duty.	Vond fees.	Outstill receipts.	Total country spirits.	Tari license fees.	Total country spirits and fermented liquors.
1	2	3	4	5	6	7	8
	Rs.	Rs.	Rs.	Rs.	Rs.	Rs.	Rs.
1901-02	56	2,385	4,396	71,583	78,364	..	78,364
1902-03	94	1,840	5,900	92,628	1,00,368	..	1,00,368
1903-04	56	2,241	3,437	1,10,656	1,16,334	..	1,16,334
1904-05	75	7,305	8,520	1,09,135	1,84,960	..	1,84,960
1905-06	75	38,809	31,722	1,24,818	1,95,349	..	1,95,349
1906-07	75	35,323	62,355	73,257	1,70,935	253	1,71,188
1907-08	75	30,672	52,171	52,797	1,44,640	757	1,45,397
1908-09	75	26,866	66,883	31,736	1,25,485	2,015	1,27,500
1909-10	50	28,454	47,702	32,606	1,08,852	1,420	1,10,208
1910-11	50	40,540	42,121	25,328	1,08,089	1,000	1,09,170
1911-12	50	65,327	50,858	23,557	1,45,742	853	1,46,595
1912-13	50	98,615 0 3	67,280	21,942 15 0	1,87,837 15 3	889 8 0	20,677 7 3
1913-14	100	1,06,698	92,402	21,615	2,20,715	1,616	2,22,331

(a) Excludes Zamindari takolis and Miscellaneous Revenues.

Excise (a)—(concluded).

Form I attached to Excise Administration Reports.)

FROM:—

OPPIUM.			GANJA AND BHANG.			YEAR.
Duty.	License fees.	Total.	Duty.	License fees.	Total.	
9	10	11	12	13	14	15
Rs.	Rs.	Rs.	Rs.	Rs.	Rs.	
19,958	9,829	29,787	4,362	3,566	7,928	1901-02
24,728	10,703	35,431	5,676	4,194	9,870	1902-03
28,985	11,551	40,541	6,416	4,006	11,022	1903-04
31,735	14,887	46,622	7,711	6,455	14,180	1904-05
35,466	17,869	53,335	8,561	7,697	16,258	1905-06
36,848	21,659	58,507	10,642 (b)	8,371	19,013	1906-07
37,659	20,284	57,943	9,979 (c)	9,010	18,989	1907-08
32,559	18,173	50,732	7,742	10,706	18,448	1908-09
32,618	20,897	53,515	7,840 (d)	11,235	19,075	1909-10
35,215	18,175	53,390	7,553 (d)	11,221	18,774	1910-11
38,327	20,039	58,366	10,544	1,034 2 0	20,880	1911-12
42,721 4 0	42,739 1 4	65,460 5 4	16,611 1 0	†12,613	27,254 1 0	1912-13
40,357	26,839	67,196	14,353	15,078	29,431	1913-14

(b), (c) and (d) includes duty on charas and store-house fee-

* Includes 704 p. duty on charas.

† Includes 25/- S. F. on bhang and 585/- L. F. on charas.

Chhindwara District.

TABLE No. 21.—Income-tax.

(This Table has been compiled from information supplied by the Deputy Commissioner.)

YEAR.	(a) Total receipts.	RECEIPTS FROM—				OBJECTIONS UNDER PART IV.		YEAR.	
		Paid by Compan- ies.	OTHER SOURCES, PART IV.		Number filed.	Amount remit- ted.			
			Number of asses- sees.(b)	Tax.(b)					
1	2	3	4	5	6	7	8		
	Rs.	Rs.		Rs.		Rs.			
1891-92 ..	8,204	..	269	8,048	1	10	1891-92		
1892-93 ..	8,824	..	252	8,607	14	242	1892-93		
1893-94 ..	8,710	..	247	8,542	6	65	1893-94		
1894-95 ..	9,210	..	247	8,542	1894-95		
1895-96 ..	9,466	..	300	9,213	17	236	1895-96		
			Number of assessees under Rs. 2,000.	Tax.	Number of assessees over Rs. 2,000	Tax.			
				Rs.		Rs.			
1896-97 ..	9,315	131	267	4,340	34	4,851	..	20	1896-97
1897-98 ..	8,851	151	261	3,821	34	4,851	3	30	1897-98
1898-99 ..	10,209	113	258	4,131	34	4,851	3	35	1898-99
1899-1900 ..	10,206	227	262	4,438	25	5,002	3	62	1899-1900
1900-01 ..	9,913	188	248	3,927	30	5,235	8	145	1900-01

(a) The figures in this column show district collections and exclude salaries paid by Government, etc.

(b) For the years 1891-92 to 1895-96 the statement shows the number and amount assessed, and for subsequent years the number of assesses who paid and the amount collected.

Chhindwara District.

TABLE No. 21.—Income-tax—(concluded).

(This Table has been compiled from information supplied by the Deputy Commissioner.)

YEAR.	Total receipts.	RECEIPTS FROM—					OBJECTIONS UNDER PART IV.		YEAR.
		Paid by Companies.	OTHER SOURCES, PART IV.				Number filed.	Amount remitted.	
			Number of assesses under Rs.2,000.	Tax.	Number of assesses over Rs. 2,000	Tax.			
1	2	3	4	5	6	7	8	9	10
	Rs.	Rs.		Rs.		Rs.		Rs.	
1901-02 ..	10,071	231	248	3,933	30	5,235	5	140	1901-02
1902-03 ..	9,600	290	282	4,909	26	4,034	95	1,700	1902-03
1903-04 ..	6,946	232	89	2,571	26	3,954	30	293	1903-04
1904-05 ..	6,731	157	84	2,356	27	4,130	7	184	1904-05
1905-06 ..	6,994	350	115	2,956	28	4,555	41	972	1905-06
1906-07 ..	7,007	383	103	2,257	29	4,283	121	230	1906-07
1907-08 ..	7,373	260	98	2,407	30	4,312	23	216	1907-08
1908-09 ..	8,199	1,485	111	3,006	48	5,193	..	91	1908-09
1909-10 ..	7,982	..	121	2,998	50	4,064	46	523	1909-10
1910-11 ..	9,219	75	156	3,935	35	4,207	14	311	1910-11
1911-12 ..	9,657	723	162	4,133	44	4,747	16	724	1911-12
1912-13 ..	9,917	904	161	4,146	41	4,789	16	295	1912-13
1913-14 ..	12,686	978	173	4,487	54	7,106	33	348	1913-14

Chhindwara District.

TABLE No. 22.—General Revenue Statistics.

(This Table has been compiled from the Departmental Annual Reports.)

YEAR.	TOTAL RECEIPTS FROM—						YEAR.
	Land Revenue and Cesses. (a)	Stamps.	Excise.	Income-tax.	Forests.	Registration.	
1	2	3	4	5	6	7	8
	Rs.	Rs.	Rs.	Rs.	Rs.	Rs.	
1891-92 ..	234,972	59,588	140,420	8,204	52,635	5,526	1891-92
1892-93 ..	235,042	58,671	131,428	8,824	56,577	5,606	1892-93
1893-94 ..	235,141	57,159	124,026	8,710	37,411	5,121	1893-94
1894-95 ..	236,480	62,063	119,972	9,210	42,268	5,973	1894-95
1895-96 ..	299,002	65,432	115,158	9,466	44,820	6,739	1895-96
1896-97 ..	273,917	60,907	102,429	9,315	49,953	7,916	1896-97
1897-98 ..	330,947	58,154	100,015	8,851	41,817	7,438	1897-98
1898-99 ..	321,554	58,108	97,876	10,209	49,122	5,421	1898-99
1899-1900 ..	156,502	54,917	121,702	10,296	48,631	4,190	1899-1900
1900-01 ..	394,742	49,014	97,647	9,913	56,196	3,833	1900-01

(a) Includes Land Revenue not on the roll and Miscellaneous Land Revenue.

Chhindwara District.

TABLE No. 22.—General Revenue Statistics—(concluded).

(This Table has been compiled from the Departmental Annual Reports.)

YEAR.	TOTAL RECEIPTS FROM—							YEAR.
	Land Revenue. (a)	Cesses.	Stamps.	Excise.	Income-tax.	Forests.	Registration.	
1	2	3	4	5	6	7	8	9
	Rs.	Rs.	Rs.	Rs.	Rs.	Rs.	Rs.	
1901-02 ..	3,04,238	23,847	68,028	1,16,138	10,071	66,118	5,455	1901-02
1902-03 ..	3,23,209	24,408	74,878	1,45,764	9,600	61,103	5,420	1902-03
1903-04 ..	2,98,565	23,623	76,714	1,67,955	0,046	60,061	5,418	1903-04
1904-05 ..	3,05,256	24,078	76,131	2,45,842	13,032	76,939	6,704	1904-05
1905-06 ..	3,07,816	17,561	77,424	2,65,105	6,994	96,386	5,777	1905-06
1906-07 ..	3,07,004	17,530	88,479	2,48,842	7,007	91,298	6,831	1906-07
1907-08 ..	2,17,698	15,087	95,317	2,21,655	7,495	94,749	7,360	1907-08
1908-09 ..	3,24,694	20,345	1,04,200	1,77,527	8,190	80,760	3,639	1908-09
1909-10 ..	3,26,419	17,853	1,07,146	1,83,107	8,200	70,554	11,602	1909-10
1910-11 ..	3,07,699	17,844	1,23,242	1,81,854	0,403	84,508	8,738	1910-11
1911-12 ..	3,05,476	17,839	1,00,242	2,26,430	0,657	98,403	9,998	1911-12
1912-13 ..	3,12,683	17,807	1,25,557	2,92,036-6-11	0,917	1,02,163	9,558	1912-13
1913-14 ..	3,01,775	17,804	1,23,572	3,21,212	12,666	1,88,103	10,348	1913-14

(a) Includes Land Revenue not on the roll and Miscellaneous Land Revenue.

Chhindwara District.

TABLE No. 23.—Income and Expendi

(This Table has been taken from Statements II and

YEAR.	INCOME.							
	Local rates.	Receipts under Cattle Tress-pass Act.	Education receipts.	Rents on Nazul lands.	Ferries.	Contributions from Provincial Revenue.	Other receipts.	Total receipts.
	1	2	3	4	5	6	7	8
	Rs.	Rs.	Rs.	Rs.	Rs.	Rs.	Rs.	Rs.
1891-92	8,956	6,202	181	858	308	1,620	2,190	20,316
1892-93	8,947	4,977	965	677	277	2,245	3,360	21,448
1893-94	9,327	5,082	63	676	286	2,725	4,326	22,465
1894-95	8,970	5,459	10	719	293	20	2,557	18,028
1895-96	11,532	5,911	6	695	257	1,994	2,469	22,894
1896-97	12,686	4,890	18	652	334	3,000	2,623	24,203
1897-98	14,254	4,728	5	469	349	3,000	4,656	27,461
1898-99	16,265	4,455	1,189	546	393	1,486	3,740	28,074
1899-1900	13,202	4,808	46	488	183	3,000	4,695	25,822
1900-01	17,844	4,245	130	376	279	..	3,072	25,946

Expenditure from District Funds.

III attached to the District Council Reports.)

EXPENDITURE.								YEAR.
Establishment.	Cattle Pound charges.	Education.	Medical charges.	Civil works.	Veterinary charges.	Other expenditure.	Total expenditure.	
10	11	12	13	14	15	16	17	18
Rs.	Rs.	Rs.	Rs.	Rs.	Rs.	Rs.	Rs.	
1,081	1,780	5,381	1,640	2,407	..	2,468	14,768	1891-92
1,287	1,805	7,760	1,648	7,016	..	5,545	25,061	1892-93
1,341	1,926	8,489	1,703	12,220	..	4,551	30,230	1893-94
1,334	1,811	7,303	1,842	3,799	..	2,850	18,045	1894-95
1,313	1,762	6,993	2,057	8,743	..	2,519	23,387	1895-96
1,436	1,709	6,478	3,524	9,059	..	5,697	27,903	1896-97
1,743	1,605	8,869	2,407	6,295	..	9,615 (a)	30,624	1897-98
1,560	2,490	6,932	3,993	5,751	..	5,545	26,271	1898-99
1,682	2,252	10,263	3,055	6,334	..	2,666	26,252	1899-1900
1,713	2,173	8,513	3,436	3,148	..	4,111	23,094	1900-01

(a) Includes Rs. 4,441 on account of Famine Relief Works.

Chhindwara District.

TABLE No. 23.—Income and Expendi

(This Table has been taken from Statements II and

YEAR.	INCOME.							
	Local rates.	Receipts under Cattle Tress-pass Act	Education receipts.	Rents on Nazul lands.	Ferries.	Contributions from Provincial Revenues.	Other receipts.	Total receipts.
	1	2	3	4	5	6	7	8
	Rs.	Rs.	Rs.	Rs.	Rs.	Rs.	Rs.	Rs.
1901-02	18,546	4,250	790	574	349	3,200	5,000	32,723
1902-03	16,404	5,771	479	500	417	9,350	7,724	40,705
1903-04	16,502	5,776	107	560	313	9,675	11,470	44,403
1904-05	15,854	7,691	1,176	598	477	10,732	7,937	44,465
1905-06	16,797	6,790	104	523	200	22,340	9,855	56,618
1906-07	17,712	7,489	191	421	334	23,000	10,395	59,542
1907-08	16,465	10,353	211	420	181	23,000	9,917	60,547
1908-09	18,789	9,014	118	425	370	25,000	10,703	64,420
1909-10	17,857	8,232	241	23	294	25,000	13,543	65,190
1910-11	17,785	9,601	299	..	297	25,000	632	53,614
1911-12	18,361	11,182	168	18	324	27,090	1,159	58,301
1912-13	17,163	11,954	476	12	196	30,210	7,884	67,895
1913-14	18,066	13,258	271	12	160	36,841	2,396	71,006

ture from District Funds—(concluded).

III attached to the District Council Reports.)

EXPENDITURE.								YEAR.
Establishment.	Cattle Pound charges.	Education.	Medical charges.	Civil works.	Veterinary charges.	Other expenditure.	Total expenditure.	
10	11	12	13	14	15	16	17	18
Rs.	Rs.	Rs.	Rs.	Rs.	Rs.	Rs.	Rs.	
1,765	2,151	9,373	2,332	11,479	..	5,205	32,305	1901-02
1,861	3,545	18,261	2,669	7,078	..	14,261	45,126	1902-03
1,983	3,152	18,440	3,289	7,443	..	13,154	47,461	1903-04
2,039	3,194	14,975	3,314	5,813	..	8,347	37,062	1904-05
2,780	3,119	22,084	6,430	11,371	929	14,287	61,009	1905-06
2,691	4,082	24,441	2,721	8,675	1,226	11,646	55,482	1906-07
2,627	4,139	20,770	2,629	13,344	1,178	13,072	58,059	1907-08
2,982	4,772	22,562	3,859	20,794	2,239	9,083	66,291	1908-09
3,035	4,515	23,088	3,507	20,793	923	8,603	64,464	1909-10
2,967	4,811	23,490	3,462	18,315	1,248	846	55,130	1910-11
3,199	5,135	24,607	3,870	14,634	1,330	934	53,709	1911-12
3,313	5,261	26,155	3,875	17,955	1,643	7,032	65,834	1912-13
3,378	5,310	28,124	3,389	2,410	1,559	919	66,989	1913-14

Chhindwara District.

CHHINDWARA MUNICIPALITY.

TABLE No. 24.—Income and
(This Table has been taken from Statements II

YEAR.	INCOME.										General Ad- ministration.	Collection of taxes.
	Octroi.	House-tax.	Water rate.	Conservancy.	Pounds	Markets and slaughter houses.	Loans.	Other receipts.	Total receipts.			
	1	2	3	4	5	6	7	8	9	10		
	Rs.	Rs.	Rs.	Rs.	Rs.	Rs.	Rs.	Rs.	Rs.	Rs.	Rs.	Rs.
1891-92 ..	8,513	891	820	134	..	2,040	13,307	569	1,289	
1892-93 ..	7,398	1,406	665	131	..	5,995	15,595	607	1,541	
1893-94 ..	7,698	1,359	745	88	..	(a) 3,003	13,493	512	1,815	
1894-95 ..	8,223	1,315	910	64	..	(b) 3,750	14,262	682	1,478	
1895-96 ..	8,030	1,083	920	60	..	1,965	12,058	607	1,907	
1896-97 ..	6,479	1,177	925	43	..	2,254	10,878	586	1,399	
1897-98 ..	8,282	1,056	985	46	..	3,157	13,526	725	1,409	
1898-99 ..	8,175	769	809	49	..	3,028	12,830	634	1,414	
1899-1900 ..	8,047	1,056	727	60	..	1,884	11,774	681	1,589	
1900-01 ..	8,228	513	827	49	..	2,702	12,319	756	1,576	
1901-02 ..	9,199	1,724	688	40	..	2,256	13,907	799	1,483	
1902-03 ..	8,870	1,065	936	49	..	7,000	17,620	874	1,736	
1903-04 ..	10,350	1,708	493	43	..	4,803	17,397	874	1,667	
1904-05 ..	12,606	1,228	620	63	..	10,852	25,269	961	1,692	
1905-06 ..	12,092	1,253	735	80	..	8,378	22,538	974	2,132	
1906-07 ..	11,960	2,022	776	101	..	6,280	21,139	1,057	2,270	
1907-08 ..	14,318	2,495	987	103	..	4,897	22,300	882	2,621	
1908-09 ..	13,073	2,745	875	97	..	8,173	24,963	1,006	3,273	

(a) Includes Rs. 1,403 on account of contributions and grants for Medical purposes.

(b) Includes Rs. 935 on account of contributions and grants for educational purposes.

Expenditure of Municipalities. and III attached to the Municipal Reports.)

EXPENDITURE.													YEAR.
Refunds.	Lighting.	Water-supply.	Drainage.	Conservancy.	Medical and vaccination.	Markets and slaughter houses.	Roads.	Education.	Repayment of loans.	Other expenditure.	Total expenditure.	25	
13	14	15	16	17	18	19	20	21	22	23	24	25	
Rs.	Rs.	Rs.	Rs.	Rs.	Rs.	Rs.	Rs.	Rs.	Rs.	Rs.	Rs.	Rs.	
512	..	292	678	4,597	1,364	..	002	1,053	..	1,034	12,590	1891-02	
398	..	429	90	4,784	1,409	..	787	2,588	..	3,227	15,920	1892-03	
381	37	5	369	4,088	1,452	..	289	2,831	..	745	12,544	1893-04	
575	..	92	244	4,096	123	3	312	3,432	495	1,172	12,704	1894-05	
537	..	30	413	4,401	725	4	95	2,931	..	554	12,164	1895-90	
433	..	689	..	4,544	871	32	402	2,670	..	1,921	13,007	1896-97	
396	..	742	101	3,954	902	11	245	3,794	..	856	13,135	1897-98	
579	18	152	251	3,810	843	40	478	3,267	..	811	12,303	1898-99	
818	..	1,401	81	4,355	1,006	..	464	3,325	..	815	14,535	1899-1900	
509	..	280	38	3,783	1,436	..	203	2,641	..	613	11,875	1900-01	
1,551	..	26	231	3,667	917	1	305	2,880	..	623	12,483	1901-02	
941	65	72	326	3,861	999	..	420	2,802	..	812	12,977	1902-03	
1,335	8	553	527	4,149	1,90	15	209	5,893	..	2,600	10,216	1903-04	
..	..	124	438	4,355	1,206	45	1,555	5,003	..	3,610	18,889	1904-05	
..	..	226	345	5,089	1,210	49	1,373	4,085	..	6,910	22,303	1905-06	
..	105	283	387	6,447	1,403	421	1,335	8,056	..	1,398	23,222	1906-07	
..	339	239	916	6,519	1,347	282	1,990	5,397	..	3,681	23,813	1907-08	
..	532	1,088	1,181	6,960	1,731	1,137	2,087	4,141	..	2,190	25,297	1908-09	

Chhindwara District.

SAUSAR MUNICIPALITY.

TABLE No. 24.—Income and
(This Table has been taken from Statements II

YEAR.	INCOME.													
	Octroi.	House-tax.	Water rate.	Conservancy.	Pounds.	Markets and slaughter houses.	Loans.	Grants and contributions.	Other receipts.	Total receipts.	General Administration.	Collection of taxes.	Refunds.	
	1	2	3	4	5	6	7	8	9	10	11	12	13	14
	Rs.	Rs.	Rs.	Rs.	Rs.	Rs.	Rs.	Rs.	Rs.	Rs.	Rs.	Rs.	Rs.	Rs.
1801-02	026	283	347	1,556	155
1802-03	840	102	140	..	857	278	2,277	157
1803-04	804	254	000	805	2,523	113
1804-05	1,005	181	6	..	590	136	1,918	141
1805-06	985	134	4	..	205	186	1,604	134
1806-07	987	144	295	195	1,621	131
1807-08	874	131	295	158	1,458	129
1808-09	1,034	110	295	268	1,713	200
1809-1800	873	79	295	201	1,448	180
1900-01	736	103	295	176	1,370	191
1901-02	1,080	126	295	408	1,909	202
1902-03	906	158	295	482	1,841	212
1903-04	1,271	176	295	475	2,217	233	52	..
1904-05	1,337	212	355	261	2,165	254	71	..
1905-06	1,429	..	202	128	355	492	2,606	175	72	..
1906-07	1,488	..	205	240	355	311	2,608	233	73	..
1907-08	1,793	..	201	290	475	214	2,973	239	69	..
1908-09	1,818	..	216	252	475	103	2,164	277	95	..

Expenditure of Municipalities—(continued).
and III attached to the Municipal Reports.)

EXPENDITURE.											YEAR.
Lighting.	Water-supply.	Drainage.	Conservancy.	Medical and vaccination.	Markets and slaughter houses.	Roads.	Education.	Repayment of loans.	Other expenditure.	Total expenditure.	
15	16	17	18	19	20	21	22	23	24	25	
Rs.	Rs.	Rs.	Rs.	Rs.	Rs.	Rs.	Rs.	Rs.	Rs.	Rs.	
..	1,118	35	175	..	540	2,032	1891-92
..	..	127	394	100	1,002	..	211	1,991	1892-93
..	..	160	816	114	1,131	..	802	3,128	1893-94
..	..	77	464	67	527	..	164	1,440	1894-95
..	..	138	491	51	529	..	155	1,408	1895-96
..	..	15	532	..	39	95	528	..	224	1,564	1896-97
..	..	78	543	93	557	..	101	1,501	1897-98
..	498	40	530	..	(a) 620	1,894	1898-99
..	490	285	536	..	201	1,692	1899-1900
..	511	51	..	100	528	..	183	1,564	1900-01
..	483	50	..	95	526	..	156	1,512	1901-02
..	..	79	462	110	..	82	530	..	322	1,817	1902-03
..	..	100	505	239	..	130	530	..	432	2,221	1903-04
..	..	57	584	187	..	27	543	..	190	1,913	1904-05
..	..	120	789	105	3.	167	559	..	318	2,308	1905-06
..	..	85	809	134	..	314	621	..	337	2,605	1906-07
..	..	99	963	102	..	70	670	..	361	2,567	1907-08
..	..	16	1,010	85	..	92	787	..	415	2,776	1908-09

(a) Includes Rs. 496 on account of Public Works (Buildings).

Chhindwara District.

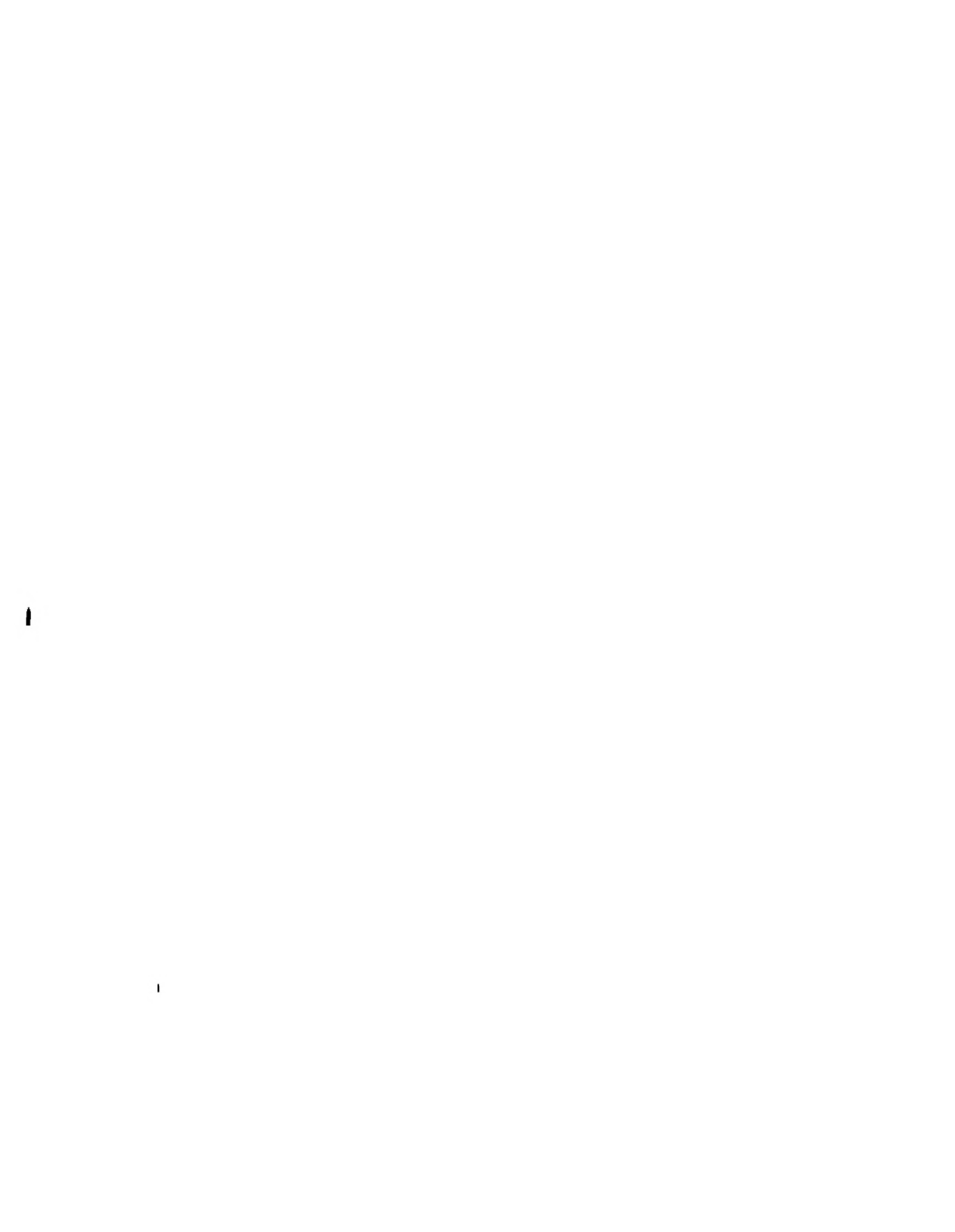
PANDHURNA MUNICIPALITY.

TABLE No. 24.—Income and
(This Table has been taken from Statements II

YEAR.	INCOME.												Collection of taxes.	Balances.
	Octroi.	House-tax.	Water rate.	Conservancy.	Pounds.	Markets and slaughter houses.	Loans.	Market dues.	Grants and contributions.	Other receipts.	Total receipts.	General Administration.		
	Rs.	Rs.	Rs.	Rs.	Rs.	Rs.	Rs.	Rs.	Rs.	Rs.	Rs.	Rs.		
1	2	3	4	5	6	7	8	9	10	11	12	13	14	15
1891-92	..	1,283	301	185	..	619	2,688	334
1892-93	..	1,300	287	488	..	449	221	448	3,199	299
1893-94	..	1,310	282	308	..	514	..	516	2,990	224
1894-95	..	1,320	259	313	..	514	442	468	3,316	259
1895-96	..	1,320	288	330	..	475	221	504	3,207	342
1896-97	..	1,322	199	413	221	881	3,036	346
1897-98	..	1,322	209	201	..	445	221	615	3,133	276
1898-99	..	1,328	208	263	..	516	220	649	3,184	241
1899-1900	..	1,082	185	274	..	519	220	607	2,887	252
1900-01	..	1,320	232	255	..	393	220	537	2,957	256
1901-02	..	1,557	258	268	..	510	220	721	3,534	262	..	10
1902-03	..	1,338	345	291	..	554	220	633	3,381	292	198	..
1903-04	..	1,082	276	294	..	558	220	658	3,988	296	225	..
1904-05	..	1,992	312	220	..	584	220	652	3,980	284	199	..
1905-06	..	2,004	..	488	400	370	..	545	220	965	4,992	286	292	..
1906-07	..	2,984	..	870	507	300	..	619	220	868	6,228	375	296	..
1907-08	..	2,923	..	629	382	300	..	468	500	634	5,896	340	319	10
1908-09	..	2,565	..	610	398	421	..	461	500	825	4,780	338	339	4

Expenditure of Municipalities—(continued).
and III attached to the Municipal Reports.)

EXPENDITURE.											YEAR.
Lighting.	Water supply.	Drainage.	Conservancy.	Medical and vaccination.	Markets and slaughter houses.	Roads.	Education.	Repayment of loans.	Other expenditure.	Total expenditure.	
17	18	19	20	21	22	23	24	25	26	27	
Rs.	Rs.	Rs.	Rs.	Rs.	Rs.	Rs.	Rs.	Rs.	Rs.	Rs.	
..	..	100	1,467	..	111	148	485	..	310	2,955	1891-92
..	927	..	116	99	800	..	555	2,706	1892-93
..	..	100	993	..	62	111	700	..	485	2,735	1893-94
..	..	396	865	..	57	259	836	..	442	3,114	1894-95
..	..	227	790	..	107	556	862	..	427	3,392	1895-96
..	..	368	935	..	110	100	814	..	470	3,232	1896-97
..	..	264	1,008	..	346	195	818	..	476	3,489	1897-98
..	..	205	866	..	291	150	819	..	408	3,130	1898-99
..	..	168	874	..	193	85	780	..	394	2,831	1899-1900
..	..	242	1,036	..	110	75	839	..	464	3,118	1900-01
..	..	178	998	..	176	90	807	..	418	3,035	1901-02
..	..	242	936	..	14	89	823	..	421	3,015	1902-03
..	..	310	1,061	09	5	211	911	..	555	3,643	1903-04
..	..	95	962	80	..	195	1,034	..	454	3,303	1904-05
..	..	230	1,371	214	70	219	2,675	..	614	5,871	1905-06
..	..	75	1,784	271	19	85	1,303	..	813	5,023	1906-07
..	..	480	2,613	201	98	647	1,668	..	585	6,928	1907-08
..	2,810	443	162	700	1,583	..	683	7,062	1908-09





Chhindwara District.

TABLE No. 25.—Education.—Literacy (with figures of Religion).

(This Table has been compiled from Census Table VIII.)

RELIGION.	POPULATION.			LITERATE.			PERCENTAGE OF LITERATE ON TOTAL POPULATION.		
	Persons.	Male.	Female.	Persons.	Male.	Female.	Persons.	Male.	Female.
1	2	3	4	5	6	7	8	9	10
Hindu	308,320	154,298	154,022	11,135	10,912	223	3·61	7·07	·14
Animist	189,249	91,608	97,581	270	276	3	·15	·30	..
Musalman	10,595	8,459	8,136	1,580	1,525	55	9·52	18·03	·68
Christian	755	398	357	443	240	203	58·68	60·30	56·86
Jain	2,002	1,041	961	544	525	19	27·17	50·43	1·98
Others	27	20	7	16	13	3	59·26	65·00	42·86
TOTAL	516,048	255,884	261,064	13,997	13,491	506	2·71	5·27	·19

Chhindwara District.

TABLE No. 26.—Education.—Number

(This Table has been compiled from information supplied

YEAR.	SECONDARY EDUCATION.				PRIMARY EDUCATION.			EXPENDI	
	Schools and Col- leges.	SCHOLARS.		Schools.	SCHOLARS.		Provincial funds.	Local funds.	
		Average daily attend- ance.			Average daily attend- ance.				
		Male.	Female.		Male.	Female.			
1	2	3	4	5	6	7	8	9	
							Rs.	Rs.	
1891-92	9	716	..	24	831	50	7,405	2,316	
1892-93	9	760	..	31	974	13	7,799	1,424	
1893-94	9	768	..	31	964	11	8,746	2,136	
1894-95	9	759	..	33	980	19	5,074	2,750	
1895-96	9	756	..	37	1,016	16	2,036	10,099	
1896-97	6	637	..	40	1,316	19	2,277	9,233	
1897-98	6	614	..	41	1,254	17	2,885	11,060	
1898-99	6	607	..	42	1,361	11	1,055	10,555	
1899-1900	6	582	..	45	1,542	112	2,572	12,139	
1900-01	6	112	..	49	1,594	98	3,005	9,448	
1901-02	6	141	..	49	2,184	109	3,263	9,767	
1902-03	6	154	..	54	2,458	94	9,603	12,676	
1903-04	7	687	..	63	2,576	92	9,876	14,194	
1904-05	8	670	..	65	2,877	67	5,202	18,037	
1905-06	7	629	..	73	3,161	105	5,713	25,154	
1906-07	8	750	52	71	3,222	67	10,021	26,634	
1907-08	8	634	92	73	3,168	83	9,866	29,481	
1908-09	9	830	78	75	3,285	98	7,385	36,407	

of Public Institutions and Scholars.

by the Inspector of Schools, Nerbudda Circle.)

EXPENDITURE ON EDUCATION.			EXPENDITURE ON		Percentage of male scholars (of private and public schools) to male population of school-going age.	Percentage of female scholars (of private and public schools) to female population of school-going age.	YEAR.
Fees.	Other sources.	Total.	Primary Education.	Secondary Education.			
10	11	12	13	14	15	16	17
Rs.	Rs.	Rs.	Rs.	Rs.			
1,692	369	11,782	5,216	6,566	5.1	0.2	1891-92
1,500	130	10,853	6,437	4,416	5.7	0.04	1892-93
1,523	233	12,638	7,500	5,138	5.7	0.03	1893-94
1,712	75	9,611	4,971	4,640	5.7	0.1	1894-95
2,098	540	14,773	6,820	7,953	6.3	0.1	1895-96
1,799	702	14,011	7,318	6,693	6.8	0.1	1896-97
1,573	462	15,980	8,775	7,205	6.6	0.15	1897-98
1,823	983	14,416	8,165	6,251	7.0	0.23	1898-99
1,678	2,561	18,950	13,136	5,814	7.2	0.4	1899-1900
1,597	2,177	16,227	13,574	2,653	5.5	0.3	1900-01
2,287	2,111	17,428	14,931	2,497	8.1	0.3	1901-02
2,318	1,264	25,861	21,939	3,922	9.1	0.3	1902-03
2,222	3,457	28,609	24,306	4,303	16.37	0.33	1903-04
1,266	5,058	29,434	21,961	7,473	17.09	0.27	1904-05
1,402	6,234	38,503	28,539	9,964	18.56	0.53	1905-06
1,312	4,667	43,234	28,311	14,923	19.32	0.70	1906-07
1,313	4,834	45,494	30,563	14,931	19.26	0.78	1907-08
1,391	6,600	51,783	38,113	13,670	20.43	0.77	1908-09

Chhindwara District.

TABLE No. 26(a).—Education —Number

(This Table has been compiled from information supplied

YEAR.	SECONDARY EDUCATION.				PRIMARY EDUCATION.			
	Schools and Colleges.	SCHOLARS.		Schools.	SCHOLARS.			
		Average daily attendance.			Average daily attendance.			
		Male.	Female.		Male.	Female.		
1	2	3	4	5	6	7		
1891-92	
1892-93	
1893-94	
1894-95	
1895-96	5	138	..	
1896-97	5	127	..	
1897-98	5	115	15	
1898-99	5	141	72	
1899-1900	2	67	..	
1900-01	2	33	..	
1901-02	6	106	..	
1902-03	5	120	..	
1903-04	1	23	..	11	212	15
1904-05	1	44	..	9	230	15
1905-06	12	199	42
1906-07	6	140	..
1907-08	6	121	19
1908-09	1	26	..	6	90	20

of Private Institutions and Scholars.

by the Inspector of Schools, Nerbudda Circle.)

EXPENDITURE ON EDUCATION.					EXPENDITURE ON		Percentage of male scholars to male population of school-going age.	Percentage of female scholars to female population of school-going age.	YEAR.
Provincial funds.	Local funds.	Fees.	Other sources.	Total.	Secondary Education.	Primary Education.			
8	9	10	11	12	13	14	15	16	17
Rs.	Rs.	Rs.	Rs.	Rs.	Rs.	Rs.			
..	1891-92
..	1892-93
..	1893-94
..	1894-95
..	1,298	1,298	1,298	1895-96
..	1,238	1,238	1,238	1896-97
..	1,424	1,424	1,424	1897-98
..	1,709	1,709	1,709	1898-99
..	240	240	240	1899-1900
..	241	241	241	1900-01
..	317	317	317	1901-02
..	410	410	410	1902-03
..	..	55	2,763	2,818	1,587	1,231	1-14	0-09	1903-04
..	..	65	3,412	3,477	1,531	1,946	1-33	0-09	1904-05
..	..	30	3,231	3,230	3,230	..	0-97	0-22	1905-06
..	675	675	675	..	0-78	..	1906-07
..	..	25	1,030	1,045	1,045	..	0-59	0-06	1907-08
..	..	2	2,225	2,227	1,116	2,211	0-60	0-13	1908-09

Chhindwara District.

TABLE No. 26(a).—Education.—Number

(This Table has been compiled from information supplied)

YEAR.	SECONDARY EDUCATION.			PRIMARY EDUCATION.		
	Schools and Colleges.	SCHOLARS.		Schools.	SCHOLARS.	
		Average daily attendance.			Average daily attendance.	
		Male.	Female.		Male.	Female.
1	2	3	4	5	6	7
1909-10	1	29	..	13	183	40
1910-11	2	64	..	11	189	42
1911-12	4	114	48	17	290	91
1912-13	3	78	59	16	244	67
1913-14	4	89	60	18	339	65
1914-15
1915-16
1916-17
1917-18
1918-19
1919-20
1920-21

Chhindwara District.

TABLE No. 27.

(This Table has been taken from Statements B and H

DISPEN- SARIES.	CHHINDWARA MAIN.		SAUSAR.		PANDHURNA.		HARRAI.		TAMIA.	
NUMBER OF BEDS AVAILABLE.	14		2		2				2	
YEAR.	DAILY AVERAGE.		DAILY AVERAGE.		DAILY AVERAGE.		DAILY AVERAGE.		DAILY AVERAGE.	
	Indoor pati- ents.	Out door patients.	Indoor pati- ents.	Out door patients.	Indoor pati- ents.	Out door patients.	Indoor pati- ents.	Out door patients.	Indoor pati- ents.	Out door patients.
1	2	3	4	5	6	7	8	9	10	11
1891	6	62
1892	5	67
1893	6	72
1894	10	108
1895	11	111
1896	11	94
1897	12	76
1898	20	94
1899	10	99	4	77
1900	13	105	2	30
1901	6	95	1	31
1902	7	94	1	22
1903	8.9	99.43	1.60	23.03
1904	8.92	93.58	0.78	20.22
1905	6.06	100.78	1.92	32.57	0.69	54.53
1906	7.09	94.05	1.15	36.36	0.51	47.21
1907	10.95	98.00	0.82	34.85	0.45	51.26
1908	10.15	98.35	0.10	30.45	0.80	61.11	..	0.24

Dispensaries.

(Part I) of the Charitable Dispensary Reports.)

CHOWRAI.		AMARWARA.		INCOME OF DISPENSARIES.					YEAR.
2		2		From Government.	Local funds.	Subscriptions.	Other sources.	Total.	
DAILY AVERAGE.		DAILY AVERAGE.							
Indoor patients.	Outdoor patients.	Indoor patients.	Outdoor patients.						
12	13	14	15	16	17	18	19	20	21
				Rs.	Rs.	Rs.	Rs.	Rs.	
..	1,066	484	1,763	325	3,618	1891
..	1,066	527	1,785	374	3,752	1892
..	1,412	382	1,661	252	3,707	1893
..	1,187	786	1,604	2,447(a)	6,024	1894
..	1,066	1,323	1,924	405	4,718	1895
..	1,080	2,909	1,956	434	6,379	1896
..	1,080	1,278	336	578	3,272	1897
..	1,099	1,449	1,480	762	4,796	1898
..	1,140	1,486	455	753	3,834	1899
..	840	1,176	509	491	3,016	1900
..	1,032	1,247	1,063	5,554(a)	8,896	1901
..	1,170	1,991	1,290	14,594	19,045	1902
..	1,213	1,931	1,933	313	5,390	1903
..	1,440	1,430	1,202	71	4,143	1904
..	2,445	3,198	3,976	53	9,672	1905
..	1,975	1,795	2,544	458	6,772	1906
..	2,055	1,595	1,673	237	5,560	1907
..	2,872	2,861	1,238	143	7,114	1908

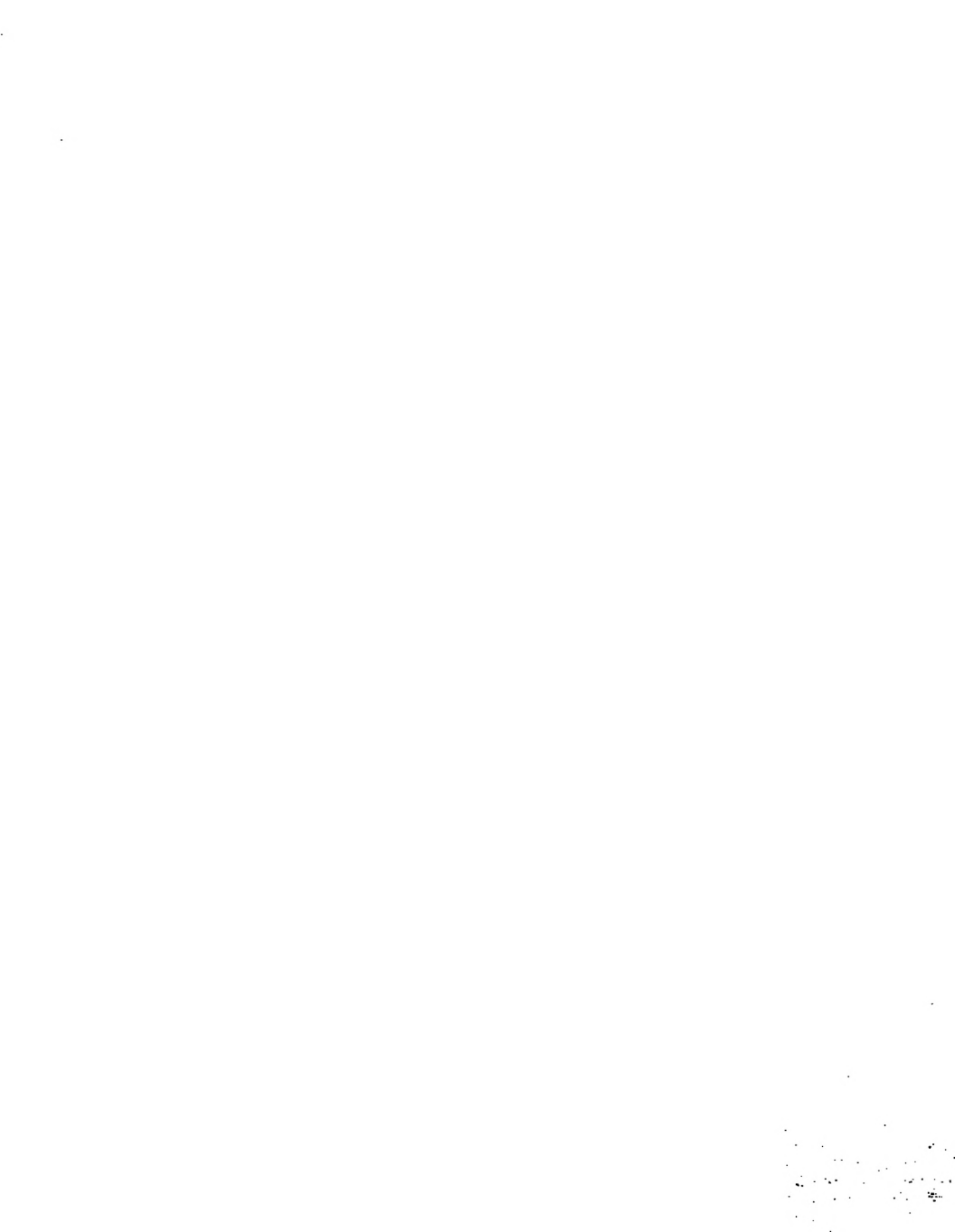
(a) Includes Rs. 2,015 on account of withdrawal of deposits.

Dispensaries—(concluded).

(Part I) of the Charitable Dispensary Reports.)

CHOWRAI.		AMARWARA.		INCOME OF DISPENSARIES.					YEAR.
2		2		From Government.	Local funds.	Subscriptions.	Other sources.	Total.	
DAILY AVERAGE.		DAILY AVERAGE.							
Indoor patients.	Outdoor patients.	Indoor patients.	Outdoor patients.						
12	13	14	15	16	17	18	19	20	21
				Rs.	Rs.	Rs.	Rs.	Rs.	
..	2,465	2,350	1,626	220	6,667	1909
..	3,363	1,750	1,766	91	6,970	1910
..	33-67	3,470	3,235	2,502	94	9,301	1911
..	28-31	5,095	2,688	1,810	96	9,689	1912
..	20-82	8,023	2,950	1,915	157	13,045	1913
..	19-67	40,497	3,947	8,212	4,683	57,339	1914
..	1915
..	1916
..	1917
..	1918
..	1919
..	1920

(a) Includes Rs. 4,772 on account of withdrawal of deposits, and Rs. 403 on account of interest on investments.



Chhindwara District.

TABLE No. 28.—Vaccination.

(This Table has been compiled from Statements I and III attached to Vaccination Reports and Statements I and IV attached to Sanitary Reports.)

YEAR.	SUCCESSFUL PRIMARY VACCINATIONS.		Per thousand of population. (a)	Number of children born less number dying under one year of age.	Proportion of column 2 on column 5.	Successful re-vaccinations.	YEAR.
	Under one year.	Others.					
1	2	3	4	5	6	7	8
1891-92	13,358	1,055	35.37	7,234	1891-92
1892-93	13,243	936	34.80	5,047	1892-93
1893-94	9,702	1,368	27.17	9,360	1893-94
1894-95	10,819	1,552	30.36	10,063	1894-95
1895-96	10,580	916	28.21	9,033	1895-96
1896-97	8,132	738	21.77	4,780	1896-97
1897-98	8,295	774	22.26	6,145	1897-98
1898-99	9,512	734	25.14	6,868	1898-99
1899-1900	12,799	998	33.96	7,945	1899-1900
1901-01	9,253	1,067	25.33	8,602	1900-01
1901-02	9,637	805	25.60	7,213	1901-02
1902-03	15,959	569	40.52	18,315	87	5,904	1902-03
1903-04	14,533	610	37.12	14,063	103	4,107	1903-04
1904-05	17,415	387	43.64	20,683	83	1,025	1904-05
1905-06	15,548	755	39.94	16,760	93	517	1905-06
1906-07	15,910	689	40.09	13,236	92	2,872	1906-07
1907-08	14,996	909	38.98	16,777	90	3,132	1907-08
1908-09	14,561	1,076	38.33	15,168	100	3,026	1908-09

(a) Calculated on population as found at the Census.

Chhindwara District.

TABLE No. 28.—Vaccination—(concluded).

(This Table has been compiled from Statements I and III attached to Vaccination Reports and Statements I and IV attached to Sanitary Reports.)

YEAR.	SUCCESSFUL PRIMARY VACCINATIONS.		Per thousand of population. (a)	Number of children born less number dying under one year of age. (b)	Proportion of column 2 on column 5. (c)	Successful re-vaccinations.	YEAR.
	Under one year.	Others.					
1	2	3	4	5	6	7	8
1909-10	12,037	1,134	34.68	16,132	77	3,817	1909-10
1910-11	14,810	1,205	3,926	17,116	87	3,237	1910-11
1911-12	15,749	1,985	39.14	17,965	114	2,801	1911-12
1912-13	14,384	2,440	32.64	16,880	117	2,236	1912-13
1913-14	15,773	2,461	41.75	20,112	127	3,350	1913-14
1914-15	1914-15
1915-16	1915-16
1916-17	1916-17
1917-18	1917-18
1918-19	1918-19
1919-20	1919-20
1920-21	1920-21

(a) Calculated on population as found at the Census.

(b) Figures for columns 5 and 6 are not available previous to 1902-03 as the Vaccination Statistics included the Jagirdaris, but the Vital Statistics did not until that year.

Chhindwara District.

TABLE No. 30.—Local Weights and Measures.

Grain measures—

One Paili (a)	= 100 Tolas.
One Kuro	= 8 Pailis or 10 Seers.
One Khandi (b)	= 20 Kuros or 5 Maunds.

Cotton Weights—

One Maund of uncleaned cotton	= 16 Seers.
One Maund of cleaned cotton	= 12 Seers.
One Khandi	= 20 Maunds.

(a) In Pandhurna one Paili = 150 Tolas.

(b) In Chhindwara the Khandi is of $2\frac{1}{2}$ maunds or 100 Seers.

APPENDIX.

Notes to supplement, correct and enlarge the information contained in the A Volume Gazetteer of the Chhindwara District.

[Corrected up to the 1st July 1917.]

For para. 182, substitute the following:—

182. The District of Chhindwara was formed on the annexation of the Nagpur State in 1854, and at first belonged to the Nagpur Division; but on the constitution of the Central Provinces by the union of the new Nagpur Province with the Saugor and Nerbudda territories was transferred to the Nerbudda Division, to which it has since belonged. It is administered by a Deputy Commissioner with Executive Assistants. The District is subdivided into 3 Tahsils, Chhindwara, Sausar and Amarwara, each in charge of a Tahsildar who is assisted by a Naib. Two Executive Assistants are permanently attached to this district, and a third is posted from time to time. One of them who is in charge of the Treasury is also the District Registrar. There are 2 benches of Honorary Magistrates with 3rd class powers at Chhindwara and Pandhurna, the former consisting of 6 members and the latter 4. The manager of the coal mines at Parasia is also an Honorary Magistrate with 3rd class powers. Chhindwara is now the head-quarters of the District and Sessions Judge who has civil and criminal jurisdiction in both the Chhindwara and Seoni Districts. There are two Subordinate Judges, one of them is also an Additional District Judge. Of the two Munsiffs one is stationed at Chhindwara and the other at Sausar. One of the Executive Extra Assistant Commissioners is an Additional Judge in the Court of the Sub-Judge and the Tahsildar of Chhindwara and Sausar act as additional Munsiffs in the courts of Munsiffs attached to their respective Tahsils; and the Tahsildar at Amarwara is an Extra Munsiff for the Amarwara Tahsil for the trial of Tenancy cases. The District usually has a commissioned Medical Officer as Civil Surgeon and Superintendent of the District Jail. An Extra Assistant Conservator of Forests is in charge of the Chhindwara Forest Division. Chhindwara is the head-quarters of the Executive Engineer in charge of the Plateau Division of which the Chhindwara District forms one of the sub-divisions.

For para. 185, substitute the following :—

185. The Treasury officer is the District Registrar. Some of the powers and duties of the District Registrar are delegated to the special salaried Sub-Registrar at the head-quarters. The District is divided into 4 registration sub-districts. The Chhindwara and Amarwara Tahsils each form a separate sub-district, while the Sausar Tahsil comprises two sub-districts, i.e. Sausar and Pandhurna. Each sub-district has got a registration office, under a special salaried Sub-Registrar.

For para. 187, substitute the following :—

187. The following is the description of the Excise Administration as in the Excise year commencing April 1, 1917. With the exception of a small area of 218 square miles in the hilly tracts of the Chhindwara Tahsil adjoining the Hoshangabad District where the physical features of the country render the continuance of outstills advisable, the contract supply system has been extended to the whole district. Under this system the liquor distilled from the Mahua flower is supplied by the contractor to Government at a fixed rate.

Liquor is supplied from the Distillery at Seoni to the 5 warehouses in the District; two of these, viz. Jamai and Tamia, are in the interior, and the others at Tahsil head-quarters.

There are 10 Sub-Inspectors, one at each of the 5 warehouses and the remaining in executive charge of circles. These are under the Inspector designated the District Excise Officer who is given one assistant of the grade of Inspector.

The revenue is realized partly from a direct duty on liquor issued from the warehouses, and partly from license fees for the right to sell. This right is sold annually by auction. Under the outstill system the revenue is realized from license fees covering the right of distillation and sale.

There are three duty rates, viz. 5/-, 3/2/-, and -/15/- per proof gallon current in the district. These are based on the nature of the tract and the condition of the drinking classes.

Liquor is issued at two strengths, 25° and 60° U.P.; the backward tribes prefer their liquor strong, i.e. at 25° U.P.

The revenue from country spirit rose from Rs. 75,000 in 1894-95 to Rs. 1,76,735 in 1916-17: the highest figure yet reached was Rs. 1,95,000 in 1905-06. The incidence of total excise revenue in 1905-06 was -/7/8 per head of population against -/8/- in 1916-17.

The total number of liquor shops has been reduced from 454 in 1905-06 to 122 in the year 1917-18. One shop on an average serves 24 square miles and 2,682 persons.

There is very little demand for foreign liquor.

The consumption of *Tari* is small, no doubt as a consequence of the

licenses for retail vend are disposed of by annual auction ; but the licenses are left to make their own arrangements with the owners of trees. The number of shops for the sale of *Tari* is 12.

For para. 188, substitute the following :—

188. In 1905-06 the revenue derived from opium and ganja amounted to Rs. 53,000 and Rs. 16,000 respectively. It rose to **Opium and Ganja.** Rs. 55,000 and Rs. 27,753 respectively in 1916-17. The total number of ganja and opium shops has been reduced from 45 and 67 to 43 and 41 respectively.

189. In line 6, substitute " 18," for " 17," and in line 7, substitute " 5," for " 4."

For the 3rd sentence, substitute the following :—

" Rai Saheb Mathura Prasad was Secretary of the Council from 1895 to 1913, and rendered valuable service in that capacity. On his resigning the office in 1913 he was succeeded by the present Secretary Mr. Govindram Trivedi."

In line 20, substitute " 88," for " 59," and in line 21, substitute " 49," " 9 " and " 4," for " 37," " 7 " and " 6 " respectively. In line 23, omit the word " now," and in line 24, substitute " four," for " three." In the last line on page 188, insert " Amarwara " between the words " Chhindwara " and " and."

190. In lines 5 and 6, for the figures ' 738,' ' 2,393,' and ' 9,736,' substitute ' 2,695,' ' 3,000,' ' 12,872 ' respectively, and in line 7, substitute ' 5,' for ' 4.' In lines 16 and 17, substitute the figures ' 410,' ' 1,200 ' and ' 5,442,' for the figures ' 105,' ' 1,002 ' and ' 4,785.' In lines 22 and 23, for the figures ' 1,861 ' and ' 8,904,' substitute ' 2,029 ' and ' 7,058 ' respectively.

For para. 191, substitute the following :—

191. The Village Sanitation Act is (in 1917) in force in Lodhikhera, Mohgaon, Pipla Narainwar and Berdi in the Sausar Village Sanitation. Tahsil and in Amarwara, the head-quarters of the Amarwara Tahsil. Lodhikhera and Mohgaon were formerly Municipalities, and on the abolition as such the Village Sanitation Act was extended to them. The receipts are obtained from a house-tax on residents and are expended on the conservancy and water supply of the villages. The " Mukaddam Rules " for improving sanitation are enforced in the villages of Umreth, Chourai, Chand, Singhodi, Seoni, Ramakona, Marud, Paradsingha, Pandrahodi, Ghoti and Saonga. About Rs. 14,105 has been spent from Government funds in the construction of 43 wells in ryotwari villages.

• For para. 192, substitute the following :—

192. The total value of the Provincial Civil Buildings borne on the books of the Public Works Department is about Rs. 8,11,000 and their maintenance charges amount to Rs. 8,100 per annum. The principal Buildings are :—The District Court House in two separate blocks erected in 1921

which with subsequent enlargements cost in all Rs. 63,400; the Civil Court House at Chhindwara constructed in the year 1913-14 at a cost of Rs. 59,400; the Government High School at Chhindwara with a laboratory and hostel erected during the year 1911-12 and 1913-14 at a total cost of Rs. 43,200; the Church at Chhindwara erected in the year 1866 at a cost of Rs. 12,900; the Cemetery enclosed in 1854 at a cost of Rs. 3,900. The Tahsil building at Chhindwara and the new Tahsil buildings at Sausar and Amarwara erected in 1865, 1911-12 and 1913-14 at a cost of Rs. 13,600, Rs. 34,600 and Rs. 30,900 respectively. The District Jail, an old building of the native Government, which with subsequent enlargements cost Rs. 1,06,500; the Deputy Commissioner's, the Executive Engineer's and Divisional Forest Officer's and Civil Surgeon's Bungalows at Chhindwara constructed at a cost of Rs. 21,500, Rs. 20,300, Rs. 18,600, and Rs. 15,800 respectively; the Circuit House constructed in 1903, which with subsequent enlargements cost Rs. 11,600; and the Police lines costing Rs. 48,200.

For para. 193, substitute the following :—

193. The sanctioned strength of the Police Force in 1915 was 407 officers and men. The establishment included a District Superintendent of Police, 1 Deputy Superintendent, 5 Inspectors, 1 Sergeant, 26 Sub-Inspectors, 60 Head Constables and 313 Constables of whom 3 were Mounted. The Railway Police is quite separate from the District Police. The maintenance of a special reserve at head-quarters was sanctioned from the 1st April, 1914, and consists of 4 Head Constables and 50 Constables mainly Garhwalis. The District Police included 11 Head Constables and 88 Constables and 3 Mounted Constables in the ordinary Reserve at head-quarters. The proportion of Police engaged in the prevention and detection of crime in 1915 was 1 to every 11 square miles and 1,270 persons. The cost of the Police in that year was Rs. 1,02,154. About one-third of the men are enlisted from the District and two-thirds from other districts of the Province and Upper India. In 1915 the force contained 97 Brahmans, 102 Muhammadans, 36 Rajputs and 18 Marathas. Of the officers 8 were Brahmans and 11 Muhammadans. The reallocation scheme came into force on the 1st July, 1914, from which date the District contains the following 17 Station Houses :—Chhindwara, Chourai, Chand, Umreth, Mohkher, Bhatoria, Bhardi and Lawaghogri in the Chhindwara Tahsil; Sausar, Lodhikhara, Bichwa and Pandhurna in the Sausar Tahsil; and Amarwara, Harrai, Khapa, Tamia and Chawalpani in the Amarwara Tahsil.

The Jagirdars had their own police till the 1st April, 1902; the Jagir was then brought within the regular District Police Administration.

For para. 195, substitute the following :—

195. Chhindwara is a 4th class district jail with accommodation for 28 persons. The Civil Surgeon is the Superintendent of the Jail. The subordinate staff consists of a jailor, an assistant jailor and 16 warders includ-

ing head warders. The average cost of maintenance per head of jail population in 1916 was Rs. 159. The manufacture of aloe fibre is the staple industry of the jail.

For para. 196, substitute the following :—

196. The highest education given in the District is up to the Matriculation Standard. There is a Government High School at Chhindwara in addition to an Aided Mission Anglo-Vernacular Middle School and two Municipal Anglo-Vernacular Middle Schools at Sausar and Pandhurna. There are four Vernacular Middle Schools at Chourai, Mohkher, Umreth and Mohgaon. The first of these is a Model Middle School and has a small hostel attached to it. The District has 103 Primary Schools of which 13 teach only up to the Lower Primary Standard. Of these 103, 84 schools are under the management of the District Council, 4 are under the Municipalities, and 15 are managed by private bodies. Only four of these are in receipt of a Government grant.

There are 8 girls' schools in the District of which one, maintained by the Swedish Mission at Chhindwara with the aid of a Government grant, teaches up to the 6th Vernacular Standard. The remaining 7 are Primary Schools. Of these, one at Chhindwara and one at Kunda are departmental, 2 are aided, and 3 are unaided institutions.

The District is under the Inspector of Schools, Nerbudda Circle, and has two Deputy Inspectors of Schools. Chhindwara has a Printing Press using Hindi and English type.

For the first three sentences in para. 197, substitute the following :—

197. The District has nine dispensaries including the main and Police Hospitals at Chhindwara, Branch Dispensaries at Sausar, Pandhurna, Chourai, Tamia and Amarwara ; and a Mission dispensary at Harrai and a colliery dispensary at Chandametta. The Chhindwara Main Hospital has accommodation for 20 indoor-patients, the Police Hospital Chhindwara for 15, and those at Sausar and Pandhurna for 3 and 2 respectively. The other dispensaries are not equipped for the accommodation of indoor-patients.

198. From the 1st sentence *delete* the words "and the sometime Municipalities of Lodhikhera and Mohgaon." In line 2 on page 195, *substitute* "11," for "10." At the end of the para., *add* the following sentence :—

"During the off season the vaccinators are employed on Sanitary duty in the district."

For para. 199, substitute the following :—

199. There are 2 Veterinary Dispensaries, one at Chhindwara and the other at Sausar, maintained by the District Council. The Chhindwara Municipality pay a contribution of Rs. 200. No charge is made for the treatment of animals. There are 3 Veterinary Assistants, 2 attached to the Chhindwara dispensary and one to the dispensary at Sausar.





